

Bard College
Student Newspaper Archive
(1895-1999)

All Rights Reserved. Copyright © 1999 by Bard College

OBSERVER

Vol. 99 No. 25 April 22, 1992

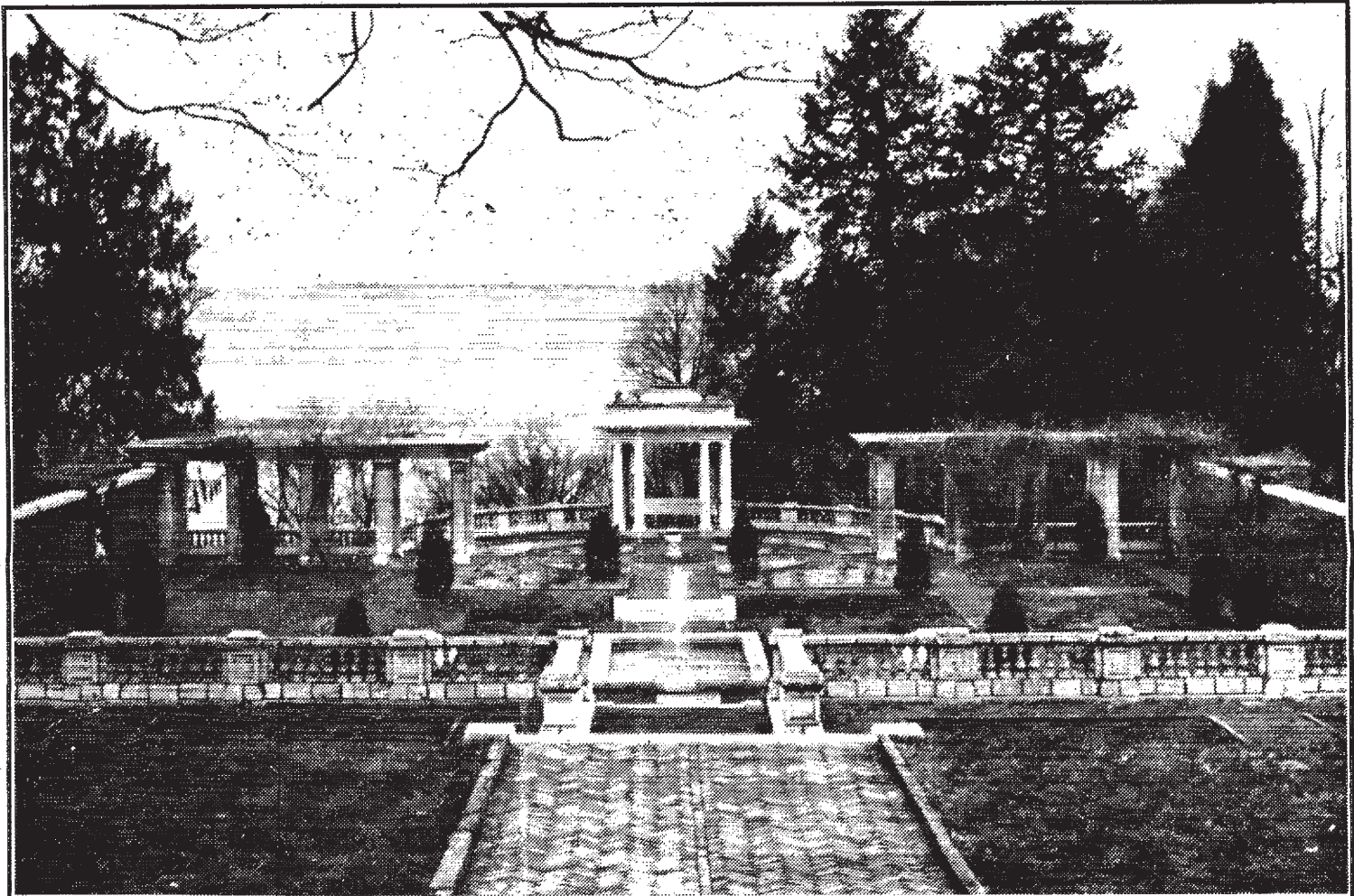
Page 1	Fighting Erosion at Blithewood Tracy S. Feldman
Page 2	Piercing Lecture by Jim Ward Michael Poirier Classifieds and Personals
Page 3	Need to Stay Up Late? Jolt is Back! Jeana C. Breton Never Forget, Never Again Yom Hashoah—a Somber Reminder to All Peter Boriskin
Page 4	Flutist, Dancers, and Narcissus Anne Miller
Page 5	Menage a Trois...BON APPETIT! EphenGlennColter Informed and Commincative—Wish You Were Here SMACES
Page 6	Earth Day at Bard Jen Horenstein Recycling Effort Being Thwarted Vanessa Hayes
Page 7	10 Simple Things You Can Do in Your Immediate Environment to Save the Earth Hellin Kay Bard's Energy Consumption: Room for Improvement Jason Van Driesche Hudson Valley Green Earth Day Walk-a-Thon
Page 8	Poet and Feminist Adrienne Rich to Read Tatiana Prowell
Page 9	Something Happened on the Way to the Ballpark... Matthew Apple The Beer Column
Page 10	As the Lord Sayeth, "Eat Me!" Gregory Giaccio Wing to Bush S/M Not Pornography Hellin Kay S/M Criticized Wrongly David Steinberg
Page 11	Criticize Hair, Not S/M Chris Elliot More on S/M Sarah Ward Choices, Choices Hellin Kay
Page 12	Calendar

Non-profit Org.
U. S. Postage
PAID
Permit No. 1
Annandale-on-Hudson

"People said 'Don't build the [Alaskan] Pipeline, it'll kill off the caribou.' Well, the caribou love it. They rub up against it and have babies."

-George Bush

Fighting erosion at Blithewood



See the Hudson River in this photo? Last year you couldn't.

Tracy S. Feldman
Guest Writer

In September of 1991, a large plot of wooded ground near Blithewood Manor was cut. This land, located about one hundred feet from the Hudson River, was cleared as part of a historical restoration project to recreate a view to the Hudson from the Manor. Once cleared, the slope became a victim to soil erosion by rain and runoff from the lawn. It also was open to invasion by introduced species like "Tree-of-Heaven," which spreads quickly and chokes out everything else growing around it.

Last semester, David Braun began his Senior Project, an ecologi-

cal restoration project, at the site to stop erosion and get some native plants growing on the slope. Since winter was fast approaching, work was difficult and slow-paced. He managed to plant grass, which will probably come up this spring, and will effectively help slow erosion on the slope.

As a response to the concerns of students in Bard's ecology program, biology professor Dr. W.T. Maple offered a tutorial this semester, allowing students to research methods of ecological restoration and to apply them to the cleared slope at Blithewood. Many measures are now being taken in order to reduce or to stop erosion, and get native plants growing on the slope.

A large pile of wood chips, created when the trees were hauled

up the slope and shredded, is ideal for mulching the soil, while helping to reduce erosion by absorbing water and holding the topsoil in place. Hay bales will also be placed on the slope near the gullies created by the fall and winter rains, and at the bottom of the slope.

Cuttings of a low-growing shrub, Red-osier dogwood, are going to be planted on the slope by the gullies. Weeding will also need to be done once the "Tree-of-Heaven" starts invading the slope this spring.

The members of the tutorial are Mike Weintraub, Keith Perchemlides, Julie Hart, and Tracy S. Feldman. They work on the slope on Fridays from 1:30 PM to 5:00 PM. Volunteers who have come to help work on the slope

have also contributed much toward getting the restoration project off the ground. However, much still needs to be done. If anyone is willing to help with the restoration efforts, their help would be much appreciated. All you have to do is show up on Friday(s) at 1:30!

Inside

Adrienne Rich...

...page 8

S/M letters...

...pages 5 & 11

JOLT...

...page 3

Piercing lecture by Jim Ward

Michael Poirier
News Editor

Last Wednesday, Jim Ward, the founder of Gauntlet International, gave a presentation concerning exotic body piercing upon the invitation of S/M A.C.E.S. and the Religion Club. Ward has been involved with professional piercing since 1968 when he first pierced his own nipples with "a pushpin and a cork...not a method I truly recommend." Responding to the growing desire for exotic piercings and jewelry around the country, Ward founded Gauntlet which has now grown to three

retail stores and a sizeable mail order industry.

Discussing the history and practice of piercing, Ward began with a slide show that pictured piercings from around the world and on virtually every part of the human anatomy. He explained that there are two kinds of piercing: temporary and permanent. Temporary piercings are often used in religious rituals in parts of the globe ranging from Africa to Southern India.

"To call these practices 'self-torture' rituals is a misnomer," stated Ward. "These are ecstatic religious experiences for these people and a very important part of their culture." Temporary piercing is also

used in S/M bondage. Ward explained that you can immobilize someone with hypodermic needles and dental floss as easily as you can with leather or chains.

Permanent piercing is Ward's business and is, as he described, "the gift that keeps on giving." People get permanently pierced for a variety of reasons, ranging from the historical rationale that it is the easiest way to protect and carry one's valuables to more modern conceptions of style and fashion. Each society has its own definition of beauty, and in some, piercing signifies the coming of age for young men and women - a practice which Ward feels would be valuable in American culture,

which tends to lack such "rites of passage."

Besides being aesthetically pleasing, body piercings (especially in the erogenous zones of the chest and genitals) become "a very sexual experience as they amplify erotic sensations and become extremely enjoyable: 99 out of 100 people don't really enjoy the pain of the actual piercing but are anticipating the rewarding pay-off."

A significant portion of Gauntlet's business derives from nipple piercing, but other exotic piercings involve the male and female genitals in surprisingly imaginative methods with such interesting names as the "Prince

Albert" and the "phrenulum." Big holes are also coming into vogue. However, as Ward warned: "The body is very plastic, and with the proper encouragement it can stretch in wonderful ways, but they [piercings] are not a kind of instant gratification and take years of patience."

"One ancient belief is that piercings let sunlight into your body," commented Ward. "I really find that belief beautiful." An actual demonstration was conducted after the slides, but this reporter did not feel obligated to observe it. I heard there was a nipple involved...

Classifieds and Personals

HEADING FOR EUROPE this summer? Jet there anytime for \$169 with AIRHITCH! (Reported in Let's Go! & NY Times.) For details: AIRHITCH@ 212-864-2000

Writer/Grad student seeks sunny country cottage with low rent and/or barter of services. Experienced in caretaking, farming, administration. Jane, 876-4452.

WANTED: Playtesters for official RPG product. All welcome. Inexperienced OK. Meet in Aspinwall 3rd floor at 8:00 tomorrow or call 758-4523, box 704.

EARN EXTRA INCOME
Earn \$200-\$500 weekly mailing travel brochures. For information send a stamped addressed envelope to: Galaxy Travel, Inc. P.O. Box 13106, Silver Springs, MD 20911-3106.

I'm looking for someone to share a room with next year! If you are interested in sharing with a smoking female, drop Rachel Smith a note in Box 1316 ASAP.

Summer Housing Wanted
The Bard Graduate School of Environmental Studies is in session June 15 through August 21, 1992. A few students will need off campus housing for that period. If you wish to sublet an apartment or house for this time period, please see Bette in Sottery 101 of call Ext. 483 (758-7483).

Peer Tutor/counselors are needed for the 1992 HEOP Summer Program. Applicants should be successfully moderated students in good academic standing. Students are required to live on campus (room and board are included) for the duration of the summer program—July 6 to the 25th. For application, salary and other information inquire at the HEOP office. Application deadline is May 1, 1992.

Personable, dependable, energetic people who love fruit and

fresh air wanted for farmstand and pick your own operation. Full-time and part-time seasonal jobs available. Free suntan to qualified applicants. Call Montgomery Place Orchards: 758-6338.

I'm looking to buy a mountain bike in good condition—speeds may vary—if you want to sell one or know of someone who does please let me know—Thank You—box 1264, 758-1935.

LOST CAT: Chrissy was last seen on 4/19/92 around Robbins. He is 4-years old, orange stripes (no white), neutered, fairly large, with gold-green eyes and a loud meow. Please call 758-2665—he is sorely missed.

Single Silver Vibrator seeks warm receptive cavity to initiate meaningful vibrations through dialogue and song... answer to Ms. Ultra Smooth WXBC AM 40 Thurs. Night 6-7:00.

Apparently the camera stolen from Olin 105 has not resurfaced, nor do we expect it to. We would just like to send a message out to

the chunk of gristle that stole it: we have Die-Hard car battery with two open wires with your name(s) engraved in it.

—The Unemployed

Stressful? You thought room draw was stressful? HA! Just you wait!
Signed, Every senior II who isn't finished yet.

Erica C. We all appreciate your services. —The entire football team.

Charles—The last personal was in code. Don't tell Bonnie what it meant no matter how much she pesters you.

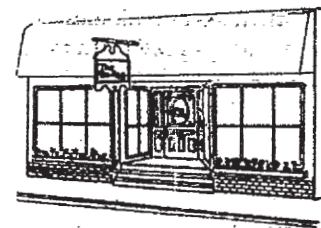
Movies for the Week:

Friday, April 24: Car Wash
Sunday, April 26: Written on the Wind

The Entertainment Committee Presents: Spring Fling

Featuring Repercussions (a 10-piece jazz-rap band from NYC) with St. Booty and the Zeitgeist Performance Troupe
Sat. May 2 at 9 pm in the Student Center

Admission \$2. Beverages provided.
Bard Students Only!



The Bookery

16 E. Market St.
Red Hook, NY 12571
(914) 758-4191

Proprietor Patricia A. Merrill

LSAT
GMAT
GRE
MCAT

Small
Classes.
Big Scores.
Guaranteed.

997-1311

THE
PRINCETON
REVIEW
We Score More!



Need to stay up late? JOLT is back!

Jeana C. Breton
Staff Writer

Remember JOLT Cola? The soda with "twice the caffeine and all the taste?" For those that do not remember: Jolt Cola came out in 1986 in a bright red can with a lightning bolt slashing down the front. It was said to provide the needed burst to either wake up or to get through a long, tough day. Bill Little of Infantino Associates (a promoter of JOLT) claims in a recent press release that Jolt is to "All-Nighters" as hot dogs are to baseball. A popular stereotype no doubt, but how accurate? Is Jolt as much of a sensation as its company claims, and just how available is this 'amazing' cola?

Jolt presumably "was the first cola to proclaim itself The Coffee Alternative." It was tried by David Letterman on national television, who responded to the experience with a "WOW!" The soda became a supposed overnight sensation as the cool refreshing way to get a sufficient dose of caffeine. Its creator C.J. Rapp (a second generation bottler from Rochester, New York) says Jolt's success was due to the fact that "People like cola. And they're always looking for a boost...a burst of energy - it's a logical concept...the vogue alternative." For two years, a magazine called *Computer Language* named Jolt the "beverage of choice" because programmers were drinking it with a passion when staying up late de-bugging programs.

Jolt's distributors were of course more than happy to respond to this demand and claim that they supply supermarkets and other grocery establishments in all 50 states and Canada. Skeptical? When was the last time anybody saw a can of Jolt cola? One student here at Bard swears that Jolt was the "unmistakable great fad" on her senior class trip to Boston in 1990, but that she hasn't noticed it anywhere since. Nowadays, she and her non-coffee drinking friends "take to Mountain Dew or Dr. Pepper for caffeine." A prominent staff member of the *Observer* says that he saw a couple six packs of Jolt at the local Grand Union over Spring Break, but did not buy any. The writer of this article personally does not know anyone who drinks Jolt, but does feel that sodas with a lot of caffeine are very popular. "In a dairy farm town called Hartford, New York, Mountain Dew is sold in higher quantities than all other Pepsi and Coke products combined," commented a Bard student. But, what about Jolt?

According to a recent press release, Jolt Cola's new campaign strategy is "dynamic and newsworthy." The company plans to keep its slogan of "a cola with a purpose" while also making an effort to let everyone know that the product still exists. They do not care that this is a "health-conscious, diet-minded era" - they are not offering consumers "sugarless, decaffeinated soft drinks." Instead, they dare to be different and even take pride in knowing that their soda has sparked a fashionable new nightclub drink:



Rum + Jolt = a "Jumper Cable." The company, however, would also like to clear up any misconceptions about their product.

"Most mineral waters [because of the massive amounts of sugar] make the Hostess Twinkie look like a granola bar." Perhaps this is

an exaggeration, but Jolt does not claim to be "a calorie-free health elixir." Despite the bad reputation of caffeine and sugar, they are still natural and desired substances. Jolt offers both with "less calories than Coke or Pepsi."

'Don't confuse sugar with calories' seems to be the advice of Jolt. They do not want their customers to be scared away by their powerful ingredients. Instead, they would like to draw more attention to their product through encouraging articles like this one and through commercials (that should soon be airing again). The current ad calls out: "Hey, you snooze...you loose. Jolt don't slow you down, let the others catch-up with you. Don't run on empty, run on Jolt!" Will it work? Only time will tell. So, keep your eyes peeled. Questions and comments concerning Jolt can be directed to Bill Little of Infantino Associates/ 2590 Brighton-Henrietta Town Line Road/Rochester, New York 14623.

Never forget, never again Yom Hashoah - a somber reminder to all

Peter Boriskin
Staff Writer

The Jewish memorial of Yom Hashoah is approaching, and with it several events will occur at or in the neighborhood of Bard. For those who are unfamiliar with the holiday, Yom Hashoah is the Jewish memorial to the more than six million Jews who were exterminated during the Holocaust. This somber holiday will be observed by the Bard Jewish Students Organization, and there will be sign-ups in Kline Commons during meals for anyone who wishes to participate in the read-

ing of the "book of names."

On Yom Hashoah, there will be an day-long vigil during which students and faculty will take turns reading names from the book, and there will be memorial candles (Jahrzeit candles) burning in the memory of those lost during the war.

In addition, Dr. Myra Young Armstead, assistant professor of history at Bard, will participate in a panel discussion having to do with both Yom Hashoah and the Holocaust. The theme of the discussion will be "The Effects of Prejudice: The Terrible Lesson of the Holocaust." There will be several other participants, among them Rabbi William Strongin and

Morris Krakinowski, a Holocaust survivor.

The commemoration on Sunday, May 3rd, will begin with a memorial service at Temple Beth-El cemetery on Route 44, in the town of Poughkeepsie. The program at the Jewish Community Center will begin with a commemoration at 3 p.m., followed by the panel discussion at approximately 4 p.m.

The program is open to the public at no charge. For additional information, contact Suzanne Grossberg, JCC program director, at 417-0430.



Enjoy a helpful and rewarding summer at Camp Sussex which is located in the beautiful mountains of northern New Jersey and is about one hour from New York City. We need M/F counselors, Head pioneering, social worker, LPN/RN/Student Nurse, Jewish Cultural program. Salaries are attractive! Please call for more information or write for: **Camp Sussex**
33 Blatherwick Dr. Berlin, N.J. 08009
Phone (609) 753-9265 or (718) 261-8700

Allstate®

Auto, Home & Life

MICHAEL HAGGERTY
Account Agent
Allstate Insurance Company
Route 9, Astor Square
Rhinebeck, NY 12572
(914) 876-3632



NOW
AT

PEGASUS

Comfort Footwear

65 Tinker St. Woodstock 679-2373

TREK Presents
Evil Kirk
Day
Saturday, 4/25
12-6 p.m.
Sponsored by the
Transporter Safety
Commission

Flutists, dancers, and Narcissus

Anne Miller
Staff Writer

This past Wednesday, April 15th, a flute recital was held in the F.W. Olin Auditorium. Flutist Patricia Spencer performed with pianist Linda Hall, along with Melina Mackall and David Costello, dancers. The program consisted of contemporary pieces which were quite unlike the usual musical presentations at Bard, such as those conducted by Leon Botstein. Among the pieces played were, *Conversations* (1988) by Louise Talma, *Tenderness of Cranes* (1991) by Shirish Korde, *Three Figures and a Ground* (1987) by Stephen Jaffe and *Narcissus*, a flute solo with digital delay by Thea Musgrave which included dance choreography by Albert Reid (Premiere).

The pieces themselves were not the only part of the program which made it highly unique; the artists themselves gave strong performances. Patricia Spencer is a founding member of the Da Capo

Players, winners of the Naumburg Chamber Music Award and in the forefront of new music performance. When not on nationwide tour with Da Capo, she appears frequently with other groups, including the Washington Square Contemporary Music Series, the Group for Contemporary Music, the Alaria Ensemble, Guild of Composers, and Prism Chamber Orchestra. A graduate of Oberlin Conservatory, where she was a student of Robert Willoughby, Patricia Spencer continued her studies with Marcel Moyse, John Wummer, and Josef Marx. She has taught at Bennington College and is presently teaching flute and chamber music here at Bard College.

Pianist Linda Hall's undergraduate studies were at Oberlin Conservatory and the Slazburg Mozarteum. She holds a graduate degree in piano performance from the Juilliard School. Ms. Hall coaches singers and often collaborates with singers and instrumentalists giving concerts which take her all over the United States and abroad. Linda Hall can be

heard in recording with cellist Jascha Silberstein on the Musical Heritage Society label.

The program began with *Conversations*, a piece which lived up to its title. It erupted into instant busyness almost as if an argument had been suddenly taking place. Being high-pitched and surrounded by occasional lower parts, it became difficult to listen to it without developing an earache. *Tenderness of Cranes* was another piece which rose to strangely high notes and remained there for a period of time. Though it was a meditative duet to the breaths and pitch, it was not extremely pleasant or even 'tender' sounding. The constant trills and squeals became irritating along with the sudden, sharp endings. Although it was an interesting composition, it was easy to lose interest partly due to the fact that it felt never ending.

Three Figures and a Ground (1987) by Stephen Jaffe, was a swing in the opposite direction from the previous pieces. Stephen Jaffe remarked, "The Figures to which the title refers are three invention-like pieces in fast tempo, each of which explores a single musical idea." It was a flowing, smooth, continuous movement, which, although quick and fast-paced, was gentler than the rest. In this sense, it was inviting and bubbled with energy and excitement, but not in the grating, disturbing fashion of the works preceding it. As it slowed down, though, it somehow lost itself and became quite dull.

Two-Bits by Henry Cowell was also a flowing, melodic, well blended piece which was the most enjoyable solo. It achieved a feeling of naivete which was a nice, refreshing break. As it grew faster, peppier, and almost nonchalant; it became full of life.

But the most eye-catching performance of all was held for last. *Narcissus* was the highlight of

the program not necessarily because it contained the best flute performance, but rather because it included something which the others did not; dancers. The lights were dimmed with peculiar blue and pink lighting, and flutist Patricia Spencer, appeared in a non-traditional outfit—a fancy purple and pink robe which looked a large scarf wrapped around her body. The atmosphere of the auditorium became mysterious and pervaded the entire audience. The digital delay system made the performance all the more intriguing; it created interesting echoing sounds which produced a spacey sensation. The dancers began in what seemed to be slow motion, then picked up the pace as they were brought together.

Narcissus is the story of a man who sees a pool of water and notices his reflection. As the other figure responds to his movements, *Narcissus* continues to become more intrigued. He feels mocked because the figure refuses to perform any individual responses. As he becomes more agitated, he rushes into the water to fight the figure, but ends up drowning. After, the forest is empty and the pool remains undisturbed as before. Although one might not interpret this story as described while watching the performance, the dancers nonetheless provide a magical sequence. Everything about this performance, the dancers, the digital delay system, the flutist, and even the lighting itself provided an exquisite emotional experience in a magical setting.

Flutist Patricia Spencer played quite well, yet perhaps other pieces not included in this program would have revealed her talent a bit more; the pieces that were performed did not seem to do her justice as an accomplished flutist. The sound and technique were well done on the high-pitched pieces, but were simply

too nerve-racking to be enjoyable for an extended period of time. Pianist Linda Hall must be commended for her flawless performance; she played clearly and powerfully, holding her own and providing a strong basis for the flute.

Even though the program consisted of a few pieces which were not noteworthy, such as the previously mentioned *Conversations* and *Tenderness of Cranes*, it was interesting and intriguing. While *Two-Bits* and *Narcissus* made up for the repetitious and shrill works, only a small number of these experiments in modern music were successful. ♪



Drivers Wanted

College Students: Drive an Ice Cream truck in your hometown in Connecticut or Westchester County this summer. Sell Good Humor and other ice creams. Earn \$650-\$950 per week. Apply now, not in May.

BLUE SKYBAR ICE CREAM

(203) 366-2641

Monday-Saturday 8am-4pm

<p>24 HOUR BANKING</p> <p>YOU CAN USE: SMART 24 / DISCOVER EXPRESS CASH / VISA NYCE / CASHIER / PLUS</p>	<p>First Rhinebeck</p> <p>FIRST NATIONAL BANK OF RHINEBECK</p> <p>Member FDIC</p> <p>RHINEBECK 20 Mill St. • 876-7041</p> <p>RED HOOK Rt. 9 South • 758-8811</p>	<p>BARD COLLEGE LOCATION</p> <p>OUR SMART 24 ATM IS CONVENIENTLY LOCATED IN THE STUDENT CENTER</p>
--	---	---

The SHAME of acquaintance rape belongs to the perpetrator. It can help to talk about it.

Call B.R.A.V.E. Bard Response to Rape and Associated Violence Education

***Information*
Counseling
Support
*Referrals***

758-7552 / 7553
All calls are confidential.

Menage a Trois...presents...BON APPETIT!

by Epheh Glenn Colter

What is the Menage?
Why a Menage?

A year ago in 1991 a few Bard students from BBLAGA put together two unexpected, unprecedented successes. The message of the first "Menage a Trois" was visibility, was SILENCE=DEATH. The message of the second Menage A Trois, the "Debutant Ball," was "We're here, we're queer, get used to it!" on National Coming Out Day. On the anniversary of the Ludlow Takeover the Menage is taking over the Old Gym...

"Bon Appetit" on May 9, 1992 continues the successes with a few changes. The night of the Menage will be hosted by the newly renamed BAGEL. In the afternoon Cafe Menagerie, sponsored by SM ACES, BAGEL, BRAVE, the Dean of Students Office and the Bard AIDS Committee will offer workshops, tables, panels, and current information addressing the diversity, plurality and resources of the Bard community - for Bard students - about Bard students - by Bard students. The Menage is not about "vanilla" sex and mysterious metaphors, it is about human sexuality. The message presented at the third Menage, an idea that has become a phenomena, urges a healthy and positive appetite for sex/uality with safe sex, knowledge of what safer sex is, and the very important

connection of unsafe sex with alcohol and drugs.

Menage a Trois is the response of the Bard hook-up scene to the 90s, to objectification, to feminist criticism, Pro-Choice, safe sex v. safer sex v. erotica v. pornography v. sadomasochism: discourses of power and empowerment. The Menage is a primal scream to the AIDS pandemic and the exchange of body fluids. It is a response to the spinal tap of sexual harassment, sexual violence and hate crimes. It is a very particular response to sexism, heterosexism, homophobia, and xenophobia.

The phenomena of the Menage is a social critique of cultural content and context, Bard's personal contribution to civil disobedience. It is not about 60s "Freedom," 70s "Liberation," or 80s "Decadence." Menage a Trois is an extension into the Sadomasochists, Celibates and Role Players in context of the dominant discourse of heterosexuality.

This is not a safe world. One has no reason to feel safe, but every reason to believe in the false sense of reality—the false balance of power—because (literally) one has every "right" in the world as a party of middle-class-straight-white-male-minded-perfectly-healthy North America. The 90s are about questioning this safety and the many dominant discourses of power—who has it -who wants it -who

defines it -who uses it -who is used by it -who abuses it -who wants to be abused by it.

The Menage is about the acknowledgement of this power in the face of the abuse of power and the abuse of privilege in mass media, pop culture, collective consciousness. This acknowledgement is the acknowledgement of the false sense of safety in "safe sex" and the false sense of safety in sex itself.

Defining oneself is not a personal risk, it does not even make one special anymore. Being defined is the passive position, not a passionate active position. The Menage is not about where one is Saturday May 9, spectator or performer, who one is or who one chooses to be, exhibition or pretension. It is not about other people—watching, observing, staring—rather you're there, been there, or heard about it. It is about oneself, ones place/balance/unbalance among other discourses. It is not about answers, more importantly, it is about questions. And it is not about questioning authority, it is about reforming the question

-who is asking the question
-who cares
-who is expected to answer
-who is expected to answer for you. The Menage is about remaking questions towards one's own responsibility, in one's

own image.

Therefore, there will be no alcohol served, no cameras allowed, and no reason whatsoever not to invite your friends this time! (w/a security guest pass) Just bring your 2\$ and a Bard ID. (OK, so it will probably be difficult to find a place on your body to put it.) We're using the money to put ourselves on the line for you, "Make Me Happy Hour" from 10-11:59pm at the outdoor MEGA REMIX MOCKTAIL BAR, dancing from midnight "until." An even bigger better Menage -not a freak show. If it is for you or your friends, you are not welcome. Sans alcohol, the Menage is the net, not the rope.

Menage a Trois is an "action" put together in the footsteps of ACT UP, is a "scene" in the sense of S/M and a "installation" as an act of post-Modern (Performance) Art...Danse Space, Dyke Space, Erotic Space, S/M Space and Quiet Space. It is a political statement of personal protest, and rather than In-Your-Face think of it as "at your disposal." In a year the Menage has come from informing Bard about safe sex to choices, judgment and priorities conducive to safe space and safer sex. The Menage offers a standing and open invitation to the Bard community for suggestions, criticism, and your participation Saturday May 9.

"Bon Appetit!"

The Menage a Trois Working Groups

Informed and communicative - Wish you were here

by S/M ACES (Sexual Minorities Aligned for Community, Education and Support)

We feel obligated to respond to Mark Delsing's article, "Helpless and being humiliated - wish you were here," printed in the April 15th issue of *The Observer*. We urge everyone who didn't read the article to which he was responding, "Some Observations On S/M And Sexual Politics," by S/M ACES, to find a copy of it. We assume that Matthew Apple's article, "Thank you, S/M ACES, for empowering me!" was a bad parody of Mark Delsing's article.

You asked us to "Face it, 'ace's' you've taken what is basically a penchant for mutual subjugation-read 'mostly women and a few guys here and there' -and veiled it in sensitive, PC, multi-culti, AIDS-aware double-talk so as to gain the Bard community's sympathies."

Let's look at some facts... Most people involved in S/M identify themselves as homosexual, most are submissive (or "bottom"), percentage wise far more women than men identify themselves as dominant (or "top"). Your image of women in bondage under the abusive control of men is one conjured from our heterocentric, non-consensually sadomasochistic media,

not from us. We've invited you to learn about the reality of S/M and its culture, we've even provided you with a reading list and a local informational group, a luxury few of us were given.

The implication that S/M ACES is... misogynist, homophobic, insensitive, non-P.C., mono-cultural, unloving, and less A.I.D.S. aware than you... is unfounded and offensive. As far as we can see you are the only one using PC double-talk so as to gain the Bard community's sympathies.

You raise the the issue of funding both at the beginning and the end of your article. You state that many groups on campus did not receive as much money from the student activities fund as they had asked for and that you are disturbed that some of your money went towards funding our group. This semester we received 150 dollars total (less than we asked for)... around 23 cents from you. Luckily at Bard there is no morality test that groups like ours must pass in order to be granted funds... unlike the N.E.A. Economic censorship is a powerful tool that has gained popularity lately... We find it interesting that you invoke it while saying in the same breath, "but I'm not calling for censorship..." (sound familiar to anyone?) We are not saying that you agree with these groups...

but you do argue like them.

We wrote: "We keep hearing bullshit about how horrible date rape is because the fear of it might force people to talk and listen to each other about what they want... what the fuck... did all these people completely miss the point? All the Newsweek and Time articles had college deans and football jocks "joking" that next we'll have to get contracts signed before sex... So what if we do?... (You may have noticed that these are the same right-wing forces that want us to go and sign contracts, give blood samples, and swear an oath "before god"... before we have sex) We all need to grow up and be able to ask, take no for an

answer, say no when we feel like it, and say yes whenever we want to."

We think you may have missed the point we were making here: Rape, date rape, coercive sex... are intolerable. We find it offensive that certain people find date rape more tolerable than people discussing the extent of their sexual desire. There is a long history of the fight for women, homosexuals and other sexual minorities to be able to discuss sexual desire in our culture. Certain misogynist forces in our country have voiced their fear that sexual dialogue may be an integral step towards stopping rape.

continued on page 8

Beverage way

supermarket of beer and soda
Rt. 9 2MILES NORTH OF RED HOOK TRAFFIC LIGHT

758-0541

● Heineken
\$10.49/ 12pk

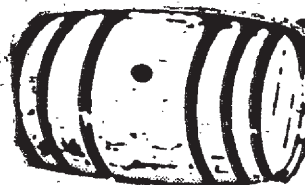
● Michelob
\$3.99/ 6 pack

● Coors
\$12.49/ suit case

● Molson
Golden
\$12.99

● Old Milwaukee
\$3.79/ 12pk

● British American soda
\$5.49/case



Earth Day at Bard

by Jen Horenstein

Thus far, the '90s have been marked by greenwashing. It's become hip to sell "natural" products to the environmentally conscious consumer, so we can buy biodegradable garbage bags or tampons with cardboard applicators and feel as if we've done our part in helping to solve the environmental crisis. Every bit helps, but this isn't enough to save the planet.

So we can't singlehandedly save the rainforests or repair the hole over Antarctica. But we can write letters, march, and lobby to make our voices heard on a national and global level.

We all know the world is going to garbage. Literally. There isn't a big ol' landfill in the sky for all of our waste to go to. The average person creates four pounds of garbage per day. Bard students create a lot more than that on weekends. Take the time out to rinse your cans and bottles and put them in the recycling bins. Newspaper and computer paper should be recycled as well.

In honor of Earth Day (April 22nd), the Bard College environmental club A.W.E. (air, water, earth) will sponsor an Earth Week in the original spirit of Earth Day - education and a call for reform on a grassroots level. Tables will be set up in front of Kline during the week, so please stop by and learn how you can contribute to making our planet a happier and healthier place to live.

Recycling effort being thwarted

by Vanessa Hayes

After hearing numerous rumors that Top Job, now owned by Waste Management of America, was not really recycling Bard's recyclables, A.W.E., Bard's environmental club, made a visit to the recycling Resource Recovery down in Poughkeepsie. Well, our trash is getting recycled! Yet, we may be contaminating the recyclables due to being uninformed about proper cleaning necessary for recyclables. Metal food cans, glass and plastic bottles must be rinsed of food particles or drained of liquids! In addition, aluminum food trays and foil can be recycled, but must also be cleaned.

This is how recycling works: we pay Top

Job to pick up our trash and bring recyclables to the Recovery. Top Job pays the Recovery to accept recyclables, then the Recovery sells materials to various companies. Clear and brown glass bottles are turned into new bottles. Broken glass can be sold to the county for asphalt roads, but the Recovery requests intact bottles because broken glass gets little financial return and is not in demand. And, plastic containers can be used for coat insulation and bottles. Note: plastic caps are not recyclable, but metal ones are!

It is very important to realize that although recycling is intrinsic to preserving our environment, more importantly, we need to reduce the amount of waste we are

producing. You can see this through the diminishing market for recyclables. For example, although computer paper and newspapers are recyclable, there is no longer a market for the Recovery. There is no demand for it because there is so much of it. They have to sell it to companies, instead of companies buying it from them; unlike the case of glass bottles, aluminum foil, metal cans, etc.

Top Job has sadly informed us that 30% of Bard's recycling bins have trash in them. These loads are being rejected by the Recovery because if the recyclables contain more than 10% non-recyclable goods they are rejected. It is so easy for us to recycle at Bard, but some people are simply too lazy to sort their garbage. Maybe they don't know what happens to garbage, and the recyclables that are getting thrown out. It is incinerated, and then the ash is shipped off to a landfill. So, not only are we taking up precious space in our increasingly overcrowded landfills, but we are also contributing to air pollution.

The Recovery is really making an effort to be environmentally conscious and sane. Their incineration plant emits half of what is legally allowed. They are also working on an ash utilization program to reduce use of landfill space by turning it into: building material (bricks, concrete), glass cleaning products, and metal. Plus, it is \$50 cheaper for Top Job to dump at recycling recovery than at a combustion plant. In other words, if all these people are striving to reduce wastes and be kind to the environment, we at Bard have it easy. All we have to do is sort our garbage and reduce our consumption of plastics, batteries, and paper, to name a few. We have bins right in front of our faces just dying to be used. Come on guys, please sort your trash.



Earth Day Calendar of Events

Wednesday:

Ozone Day
(information table
table in Kline
Commons at lunch
and dinner)

Thursday:

Energy day
8:00 p.m.
A presentation of Dr.
Seuss' *The Lorax*

Friday:

Farming and the
Organic Food
Industry Day
8:00 p.m.
Coffeehouse with
environmental theme
in Albee Social

Saturday

1:00 p.m.
Walk-a-Thon. Meet
behind Stevenson
Gymnasium
2:00-5:00 p.m.
Ravine Clean-up.
Meet in Tewksbury
field

The Bard College Community
produces well over 30 tons of solid
waste a month.

10 simple things you can do in your immediate environment to SAVE THE EARTH

by Hellin Kay

1 - When brushing your teeth, **DON'T LET THE WATER RUN!** Fill your cup, turn off the faucet and brush. You can waste up to 8 gallons of water by letting the water run.

2 - Buy products that have a small amount of or no packaging. One half of all paper production and one fourth of all plastics production goes into packaging.

3 - Take quick showers, instead of baths. You can waste over 20 gallons (depending on how long you're in there) in a single LONG shower or bath.

4 - Snip six pack rings. Birds and various marine animals often get caught in them, drowning or strangling themselves.

5 - **RECYCLE!!** Most anything and everything can and should be recycled! Use recycled paper products to complete the recycling oop!

6 - Don't accept shopping bags paper or plastic) from stores. Either bring your own canvas shopping bag, your backpack, or simply use your hands, especially if your purchase is small.)

7 - Use rechargeable, rather than disposable batteries.

8 - Buy products made of materials you *know* you'll be able to reuse or recycle when you are through with them.

9 - Recycle your motor oil. Invest in a D.I.Y. oil recycling kit e.g. "Pac-Lube oil changer" made by Pacific Landings, Ltd. and the oil change Recycling Kit" by the Cott paper Co.)

10 - Eat less or NO meat! It takes an area of rainforest land the size of a small kitchen to produce one beef patty!

Bard's energy consumption: room for improvement

by Jason Van Driesche

At the insistence and under the direction of Director of the Physical Plant, Dick Griffiths, Bard has taken a number of steps to improve energy efficiency in the last fifteen years. Right after the oil crisis in the mid '70s, the college installed a computerized energy-use monitoring system which eventually reduced electricity use by 25% and oil use by 33%. Bard's

standards for insulation in new construction and major renovations exceed New York State standards by a significant margin. And the college has begun in some places to use compact fluorescent light bulbs, which use about 60% to 70% less electricity than incandescents.

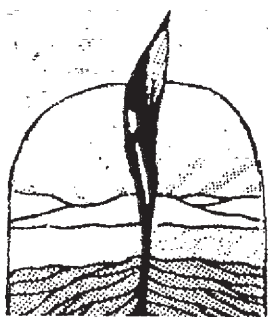
But much remains to be done. Anyone who lives in Albee or Seymour knows how much heat is lost through leaky windows in

those buildings. The college still uses many incandescent bulbs — in Olin, in Stevenson, in Kline, everywhere. And brightly-lit rooms with no one in them are a common sight at Bard.

The college as an institution can only do so much. A lot depends on us as individuals. So turn out the lights when you leave a room, recycle all you can, turn down your heat, if you are able. Try being conscious of how much en-

ergy you use.

I am doing a two semester independent research project on two kinds of energy use at Bard and how to reduce them: lighting and materials use (recycling). Anyone who is interested in finding out more about the project or who wants to help put it into action next semester should contact me through campus mail or by meeting me in Kline or walking down Annandale Road or climb-



Hudson Valley GREEN

Earth Day Walk-a-Thon

WHO: Bard students, faculty staff and community members

WHERE: The Walk-A-Thon will begin at the rear parking lot of the Stevenson Gymnasium. The five mile scenic walk winds through a network of cross country trails. The finish will be at the Ravine dormitories, where the Ravine Cleanup will take place at 2:30pm.

WHEN: Saturday, April 25th, 1pm

WHAT: Walk-A-Thon participants are encouraged to seek individuals to sponsor them. The sponsors pledge to pay an amount per mile the participant walks. One dollar per mile is a good pledge, but any amount is acceptable. The proceeds will be donated to HUDSON VALLEY GREEN of Red

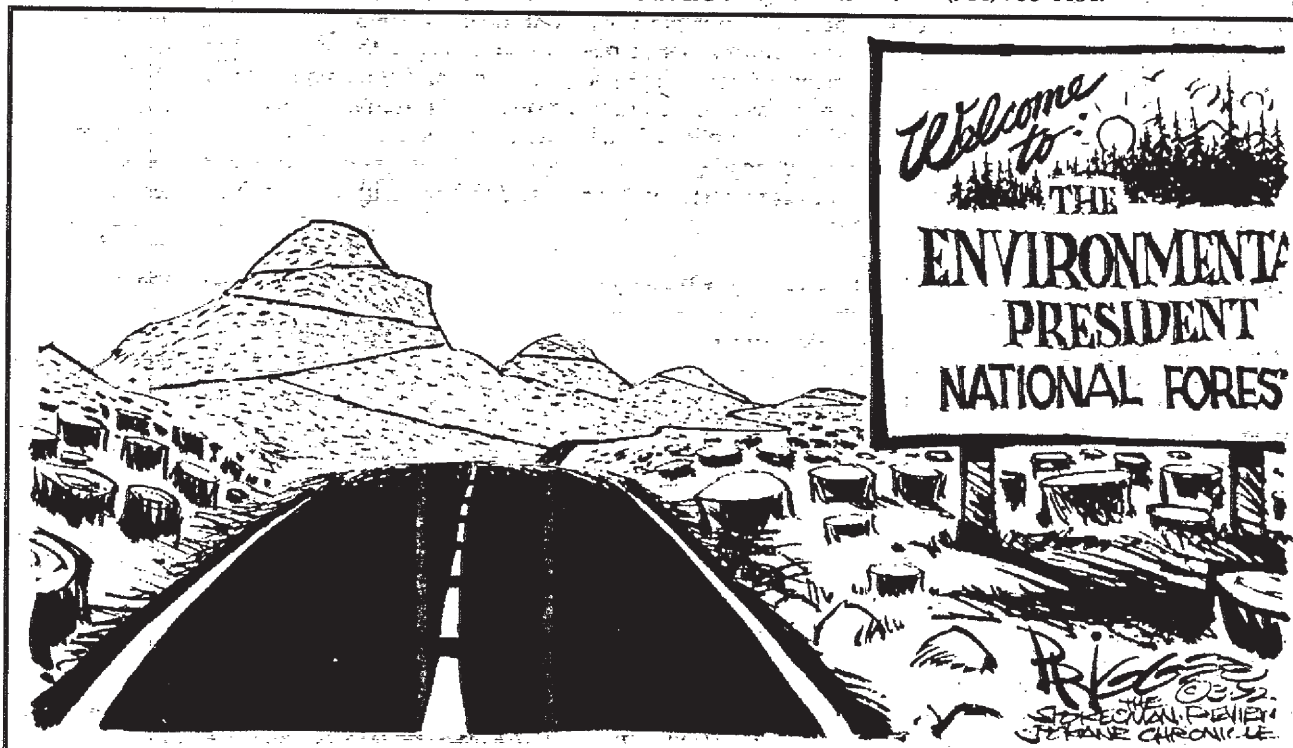
Hook. The funds will be used by HVG for education and increased awareness concerning environmental issues. If your sponsors are willing, collect their pledges when they sign up. You turn in the funds at the start of the Walk-A-Thon.

HOW: To pick up a pledgesheet,

stop by the Recreation/Athletic Office at the Stevenson Gymnasium or call Kris Hall at ext. 530. All pledges must be turned in to Kris by Friday, May 1st. Participants are asked to carry a brown bag during the Walk-A-Thon to collect trash.

Founded in 1981, Hudson Val-

ley Green is a non-profit organization whose primary interest is the environment and safe energy sources. HVG's purpose is to help inform and activate the public for greater participation in the general debate on these and other issues. For further information about Hudson Valley Green, call (914) 758-4484.



Distributed by Tiziana Media Services

Poet and feminist Adrienne Rich to read

Tatiana Prowell
Arts Editor

On Tuesday, April 28 at 8 p.m. in Olin Auditorium, noted poet and feminist, Adrienne Rich, will read from her latest work and National Book Award/Critics' Circle Award nominee, *An Atlas of the Difficult World*.

Rich is the author of more than twenty volumes of poetry, including *The Will to Change*, *The Dream of a Common Language*, and *The Fact of a Doorframe*. She has also published five prose works, two plays, two translations, and has contributed to over twenty other translations, anthologies, and critical works.

Rich has also been the recipient of numerous prestigious awards for her writing, including two Guggenheim fellowships, a Bollingen Foundation translation

grant, the National Book Award, and the Fund for Human Dignity Award.

As an undergraduate, Rich read major male poets exclusively, among those being Auden, Blake, Donne, Frost, Thomas, and Yeats. During this time, Rich published her first volume of poetry, *A Change of World* (1951), which won the Yale Series of Younger Poets Award. In *American Poetry Since 1960*, Albert Gelpi described Rich's first publication: "...[the poems reflect] the stereotype—prim, fussy, and schoolmarmish—that has corseted and strait-laced women-poets in 'poetesses' whom men could deprecate with admiration."

By Rich's fourth volume of poetry, *Snapshots of a Daughter-in-Law: Poems, 1954-1962*, she had begun to consider her role as a woman in a male-dominated society. Rich explains, "In the late

fifties I was able to write, for the first time, directly about experiencing myself as a woman." Commenting on *Snapshots*, she says, "[When I published]... a book of poems which was informed by any conscious sexual politics, I was told, in print, that this work was 'bitter,' 'personal'; and I had sacrificed the sweetly flowing measures of my earlier books for a rugged line and a coarsened voice."

Rich was not deterred from her new aims by this criticism, explaining that to achieve the 'sweetly flowing measures' of those early poems, she had "in many cases suppressed, omitted, falsified even, certain disturbing elements."


Great controversy accompanies the many works she has since published, largely surrounding her depiction of males. In the *Times Literary Supplement*, Jay Parini

stated that in *A Wild Patience Has Taken Me This Far*, Rich "willfully misrepresents men, committing the same act of distortions that she complains about elsewhere." On the other hand, in *American Triptych: Ann Bradstreet, Emily Dickinson, Adrienne Rich*, Wendy Martin commented that Rich's poetry "establishes a coherent point of view, a feminist identity and poetic vision... Her poetry, then, like all good poetry, changes the way we perceive and experience the world."

The 20th century poet, W.S. Merwin, stated, "Adrienne Rich's poems... have been the making of one of the authentic, unpredictable, urgent, essential voices of our time. All her life she has been in love with the hope of telling utter truth, and her command of language from the first has been startlingly powerful."

Despite the range of opinions

concerning Rich's feminist ideology, she consistently draws large audiences to her readings. Bard professor, James Chace, who called Rich "one of the greatest American poets of the 20th century" noted that she is "not just a notable figure and wonderful poet, but a very powerful and compelling reader." Chace, who holds the Henry R. Luce Professorship in Freedom of Inquiry and Expression, explained that the reading will be co-sponsored by his professorship and the Languages and Literature Division because "it is important to sponsor someone whose voice is a major voice in feminism and in political and literary life. [We seek] to broaden the chair to include more than just international relations."

Bard professors James Chace and Elizabeth Frank will introduce Ms. Rich. 

Informed and communicative continues

continued from page 5

Nowhere did we imply that "vanilla" sex is a "realm of bullshit misogynist homophobia". "Vanilla" sex is great... as is the ice cream... but we find it gets a bit boring. Not that life is boring... there's much more to life than sex... and there's much more to sex (and ice cream) than "vanilla". We also find that pure "vanilla" is unattainable... We wrote: "All human relations inherently have aspects of power, S/M acknowledges this balance of power and (hopefully) uses it to help the people involved empower themselves. We've found the subtleties of consent that exist within human relationships can be deepened and amplified within an expressed S/M relationship or scene. S/M is very self-conscious, in order to work safely, both physically and emotionally, one has to be very aware of what is going on with yourself and your partner(s)." Everyone needs to start acknowledging how un"vanilla" their sex

is and not feeling bad about that.

We find your denial of our loving relationships offensive. As you wrote in your article: "...The S/M ACES are trying to tell us about the heart-warming 'really meaningful' sexual experience you and your partner can share when you, with a riding crop in one hand, tie a leash around his, or more likely, her neck and command her to bark like a dog as the welts get redder and redder. Nice."

Not to imply that you are homophobic, but your portrayal of our relationships is very similar to the mainstream homophobic view of homosexual relationships... "Dykes are bitchy butch man-haters, wanna-be men with fake dicks and are just too ugly or uppity to get a man to love them... so they're forced to fuck other ugly girls and they're oh so promiscuous... Fags are wanna-be girls who like to get fucked in the ass, suck dick, and molest children and animals... god are they pro-

miscuous... They couldn't actually love each other... Where as we really know what love is... and it's not that." If you haven't noticed real life isn't what you see on T.V... Many of us have long standing healthy relationships which have been made possible in part by the communication skills and self-respect that S/M has taught us.

Your solution to our "problem" is also the same that many give to homosexuals... "don't try to reach out and form a community... don't try and dispel the myths that surround and bind you... don't read or add to the body of truthful literature about others like yourself... hate yourself... find out what's wrong with you... maybe you can be fixed!... then you can be just like us... normal."

We find it hard to believe that you are unable to see how levels of trust can be built within a relationship by confronting your fears with your partner and

coming out emotionally and physically unharmed. Yes, one needs to be brave... The idea that: "If you need to be brave, what you are doing is probably going to get you fucked" is ridiculous. How can you feel that bravery is a meaningless trait?

You need to read your Dworkin... She doesn't feel that we should keep our fantasies in our head... we need to clean them out of our head. Not just S/M fantasies but all power based fantasies... including all heterosexual fantasies... because as you know there is a big power dynamic involved in heterosexual sex.

You ponder: "(You know, S/M seems to me like one of those decadently entertaining things the idlerich-no minority around here need to do to make life something less than perpetually boring—which it isn't.)" Gee it's the poorer-than-thou line... not uncommonly heard around here in order to try and draw class lines between us and them... The class difference

between individual Bard students is minimal compared to the difference between Bard students as a group and the rest of the country. The class difference within S/M ACES is identical to the Bard campus as a whole.

We wrote and you partially quoted: "If you enjoy S/M in your fantasy life and are able to expand it so that you see it for what it is, it's less likely to slip in to your real life. One may enjoy being helpless and humiliated or controlling and abusive in your fantasy life and when you do it in a loving S/M context you're able to see what is really going on in your head... it then becomes very clear how inappropriate this behavior is in your outside relationships. As our culture changes these fantasies are apt to change, but to deny them now and let them seep into the way we treat each other, non-consensually, is very destructive to the aim of equality."

We believe you have missed the point we made here and may account for your feelings of helplessness and humiliation in your day-to-day life. S/M can be used as a tool to help you recognize the power dynamics involved in how you allow yourself to be treated and how you treat others, non-consensually in your day-to-day life. So once again we invite you to read about the reality of S/M... It couldn't hurt.

announcing 20% discount

35 Mill Hill Road
Woodstock
679.2251

CATSKILL
ART &
OFFICE
SUPPLY

328 Wall St.
Kingston
331.7780

Except for: color copies, film, discount processing

UPSTATE FILMS
RHINEBECK 876-2515

Adm: \$4.50;
Members: \$3.00

Wed & Thur, 7:00-DISCREET CHARM of the Bourgeoisie. 9- MINDWALK

Fri, 7:00 & 9:30; Sat & Sun,

4:30 & 7:00; Mon - Thurs,

7:00

The latest installment in a fascinating time lapse study of human development begun in England in 1964 when 14 seven year olds from different backgrounds were filmed with follow ups every 7 years since...

All Films are Separate Admission

Sat- Thurs, 9:30

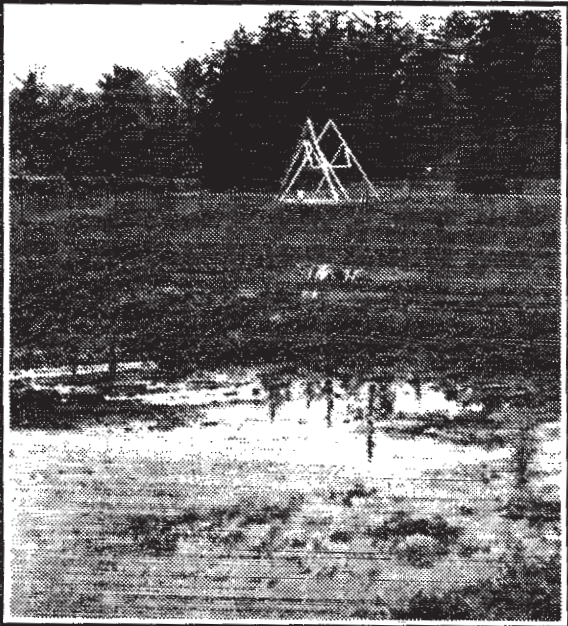
35 UP
YOUNG SOUL REBELS

1977- England- Part Thriller, part social critique and all multicultural celebration... a mulatto hetero & a black homosexual operate a pirate radio station playing non-mainstream funk soul

Something happened on the way to the ballpark...

Matthew Apple
Sports Editor

Bard softball enjoyed three games on Wednesday before the angry gods of the sky responded to some fool's rain dance by



Yes, this is the inland sea that was once left field.

soaking Bard's campus with three straight days of rain. Thanks to huge swamps in left and center fields, softball games on Thursday, Friday and Monday were all postponed until later in the week. The rescheduled games will be (read carefully):

Friday, April 24th
2:30 SPS vs. Sexual Cannibals
3:30 Irregular Group Dynamics vs. E. Coli
4:30 Photo Flo vs. Slut Trash
5:30 Simon's Sluggers vs. E. Coli
6:30 What's Our Name vs. Irregular Group Dynamics
Saturday, the 25th

noon Da Luvaghs vs. 2 Legit 2 Quit
1:00 SPS vs. 2 Legit 2 Quit
Tuesday, the 28th
6:30 What's Our Name vs. Slut Trash

After the field dried up (albeit infinitesimally), six teams played three games in beautiful weather (finally) on Tuesday. We'll Go Pass/Fail, Thanks overcame Flaccid Susuki 11 to 10 for their first win, while Simon's Sluggers "swamped" Photo Flo 16-7.

Game of the Week
The lead frequently changed hands in a game between the two Bard intramural softball teams that insist on keeping the same names year after year (this is not a judgment call, by the by). In the last inning, the People's Film Front Softball Liberation Army holding to a slim lead, Margaret and the Meatbangers banged back to tie the score. The winning run came from the bat of Schaunette Ondre, whose mighty two-base clout completed the sensational win in a well-played game by all.

Play of the Week

Photo Flo had one shining fielding moment in their 16-7 loss to Simon's Sluggers. Shortstop Nick Lantz snagged a soft liner and ran to second to cut off the runner who was on first base. Rather than throwing the ball to first for the out, Lantz outran the runner back to first, tagging her out just in front of the base for an unassisted double play.

Men's Tennis

After a 9-0 loss to the College of

Saint Rose, the men's tennis team prepared for the NAIA District 31 Tournament, the winners of which get the chance to enter the NAIA finals in Kansas in May. However, due to the aforementioned dismal weather, the entire tournament wasn't able to be played. The tourney will be completed this Sunday at Manhattanville College at 10 am. The Blazers play two other matches this week, against John Jay College at 4pm and Sarah Lawrence at 2pm. Both matches are at home.

Homerun Contest

Friday, May 1st at 3pm at the Tewks field.
Each participant will be pitched ten balls.
There will be prizes for the top three hitters.
For more information, call Kris Hall at ext. 530.

We're putting on a great spread this Summer for you!

Whether you're transferring credit back to your four-year school, working toward your Associate's degree or brushing up on your professional skills, our summer classes offer a tantalizing feast for your mind.

The four- to eight-week class sessions are specially prepared to leave plenty of summer fun in your summer. Register now! Sessions begin May 26 and June 22 on the Stone Ridge campus.



Ulster County Community College

Stone Ridge, NY 12484 914: 687-5000, 338-2211

A Unit of the State University of New York • An Affirmative Action Equal Opportunity College

Call 800-724-0833 for more information and a list of summer classes.

The Beer Column

Our introductions are getting tiresome.
Ringnes.

Phantom: The Ringnes export worried me at first. It has the color of Corona and the scent of Steinlager. The flavor is not so bad—a little bit of an aftertaste, but otherwise mellow. It has a familiar kind of taste, but I can't quite seem to place it. Even I can't quite seem to place it. I guess it's just a forgettable kind of beer.

Finnegan: I wouldn't take that severe of a view. First of all, I really like the Steinlager and this, though mellow, is much the same—a tart, slightly bitter, slightly citrusy brew that is as light in color as it seems in alcohol content. There may be a bit too much carbonation in this beer, which, as a matter of discussion, is from Norway (our first from there) and is marketed with its twin Ale (kinda like an evil twin, only not). Anyway, the box says that it's aged for 12 weeks—something that would give it that character. I don't really like all the bubbles, but maybe the ale is better, eh Phant?

Phantom: Yeah, we'll try it ASAP.

Finnegan: Whoa! This is a big

beers	Ringnes ale	Ringnes beer
F	2	1.5
Ph	1.5	1.5

head, and the smell is completely different from anything that I've ever tried before. It's a really great color, too: dark, but still transparent. Unusual and cool. The taste is Bavarian—kinda like Spaten, but different. Interesting. Phantom?

Phantom: If you couldn't place the smell, try some stale potato chips; that's what it is to me. In all other facets, you're right, and it is very Bavarian. Compared to the Spaten, it's a little sweet, but they definitely seem to be kin. What's strange is that the Ale is nothing like the beer. I would never, ever, guess that they were related.

Important note: Because this year's senior class is sooo cool, it has managed to raise enough money to purchase some high quality kegs of beer. In the next

few weeks, all seniors will get something in the mail listing some of the options. Now's the time to look through all those old copies of the Beer Column that we know you've saved and pick out your favorites so you can write 'em down and send 'em c/o the Observer (or you can talk to us if you're one of the "elite" few that knows us and can stand the smell).

New Sports Editor wanted.
Apply through Campus Mail or in person at the Observer office in the basement of Tewksbury.

As the Lord sayeth, "Eat Me!"

by Gregory Giaccio

It seems that food metaphors are the best way to talk about touchy sexual topics. Some of you may remember how well it worked in "Spartacus." The movie proved that sex and food have been connected ever since the days of the Ancient Romans, and probably before. Sex is, after all, a lot like food in that both can lead to disease, weight gain, and eventually, death.

I am, of course, talking about the Salad Bars. The Salad Bars submitted an article to this publication a few weeks ago that was intended to educate, but got some people riled up as well. Some people don't like to see salad talked about. It offends them. They regard salad as immoral much as vegetarians regard eating meat as immoral. Others may dislike salad because of their religious background, like not eating meat on Fridays for Catholics and abstaining from pork for Jews and Muslims.

Those people who were offended by the open talk about salad responded. They seemed insulted that they should have to help fund the salad eating experiences of others. They also disliked the fact that the Salad Bars seemed to think of themselves as gourmets who were superior to those whose diets are generally of the meat and potato fare.

Now there some people, who although they don't eat salad themselves, have nothing against people who do. However, they don't like to see people who won't eat salad passing judgment against those who do. Besides, before the Salad Bars, very few people even thought about salad objectively. Take some time now. Think about salad.

I know what is on the minds of my readers. You are asking "Greg, just how do you feel about salad?" Well, I'll tell you. While I don't get much food at all, I see nothing wrong with those who do. If people want to eat salad, they can eat all the salad they want. If they want to eat oysters and snails, that's fine with me too. I respect their right to privacy.

I respect the Salad Bars' right to privacy so much that I wish they would exercise it a little more often. After all, I am only concerned with my diet; I really don't need to know what anyone else's is like. I especially do not need to see fliers of some vegetable drawn and quartered with his carrot in a harness, if you know what I mean. In fact, I could live a full and happy life if I never saw one of those fliers, or others similar to it, ever again.

I'm not saying that it's immoral to be open about your dietary intake - it's just a matter of good taste.

Senior Class Care Package Drive Is Happening

Have your parents been asking?

Have your roommates been wondering?

**CARE PACKAGE
ORDERS ARE IN!**

They will be arriving in early May--before finals. If your parents/relatives order one (or two!) you will receive a pink card in your mail box.

Wing to Bush

Dear Editor,

If President Bush will not allow counseling for abortion in clinics funded by the government, wherever they are, then he has no business (as he announced on Friday) cutting off welfare from mothers who continue to have children because what he has created by the government's lack of responsibility, is a situation which can only lead to continued unwanted pregnancies.

Andy Wing

The Bard Observer

Editor-in-Chief
Greg Giaccio
Managing/Sports Editor
Matt Apple

News Editor
Mike Poirier
Features Editor
Caleb Frasier
Arts Editor
Tatiana Prowell
Photo Editor
Fred Baker

Production Manager
Roy Isefuku
Graphics Designer
Keightie Sherrod

Copy Editors
Tatiana Prowell
Andrea J. Stein
Matt Gilman

Business Manager
Lynda Fong

Advertising Manager
Oliver te Boekhorst
Chris Riley
Circulation Manager
Erica Cobb

Typists
Jennifer Shirk
Andrea J. Stein

The Bard Observer is published every Wednesday while class is in session.

Editorial policy is determined by the Editor-in-Chief in consultation with the Editorial Board. Any opinions which appear unsigned are those of the editorial board and not necessarily of the Observer staff.

Letters to the Editor must not exceed 300 words and must be signed legibly. All articles, cartoons, and photographs that are submitted by deadline will be considered for publication. Turn all material in at the front desk of the library by noon Friday a week before the publication date. The Editor reserves the right to edit all articles (except those intended for the Another View page) for style and length.

Classifieds: Free for Bardians, \$5 for all others. Personals are free. Display classifieds: \$5.00 for local, \$10.00 for national.

Display ads: contact the Ad Manager.

Bard College
Annandale, NY 12504
(914) 758-0772

S/M not pornography

Dear Editor:

In reading this week's (April 15) "Another View" columns, I was truly surprised at how misunderstood S/M ACES seems to be. The people who wrote expressing their negative views on the topic of S/M seem to have no knowledge of what S/M (and its associated topics) involves. I don't know what percentage of the Bard community's view they represent, but their views seem misinformed and their judgments made on the one article they read in the Observer (and probably various stereotypes they've picked up in other places). Leaving aside the actual physical practice of S/M for the moment, it is important to consider the other cultural aspects that are involved and associated with S/M. These aspects must first be understood before making a final judgment on S/M, its practice, and its practitioners. S/M is not pornographic violence that automatically degrades women (by the way, both of the views expressed last week were by males). Although I am not an expert on the practice of S/M itself, I do know that the books and publications mentioned at the end of the S/M ACES article have nothing to do with pornography. These books, if given the chance, could actually help understand why S/M is practiced and enjoyed by some. Although I can't speak for every publication mentioned, I can speak for the ones I am familiar with. "Modern Primitives" and "Angry Women" are both excellent publications, put out by RESEARCH magazines that have NOTHING TO DO WITH PORNOGRAPHY. "Modern Primitives" explores cultures and individuals that practice age-old rituals (i.e. the Native American Sundance) in today's modern world. It brings attention to not only body-piercing, and the art of tattooing, but other forms of body alterations that are done for not only spiritual and cultural reasons, but aesthetic ones as well. "Angry Women" is a book of interviews of female performance artists, whose work is strong and controversial, as well as a beautiful expression of feminism and being a woman. And YES, it is ANGRY! The women represent a broad spectrum of the performance arts

arena: some have worked in the sex industry; some practice S/M; and some are political activists. Most important, they all utilize their feminine strength, combined with artistic talent, to present the world with some of today's most crucial issues such as: AIDS, abortion, rape (of women and mother earth), war, violence against women, and the basic state of our crumbling world. Some of these women have actually been called pornographic...by Jesse Helms. One of these women is also a Bard graduate, from the 60s (Carolee Schneemann).

"Piercing Fans International Quarterly" is the publication put out by Gauntlet (and Jim Ward). It often covers much of the same territory as "Modern Primitives," as well as sharing its new piercing techniques and discoveries. As far as the other publications go, although I have yet to read them all, I doubt very much that they entail pornography in its classical mode, as found in "Playboy" or "Playgirl." There is a whole other culture that backs up and legitimizes S/M (and other practices which at times -but not always- go hand-in-hand with S/M). Until you are aware of that culture, its background and purpose, you cannot honestly judge it. Of course, as a free-minded individual you can make any judgment you like, but do not be surprised if your own judgment is then labelled ignorant and misinformed.

By the way, "Angry Women" is now available in the campus bookstore-buy it, read it, understand it-it is empowering reading that every woman in the world should experience.

Hellin Kay

S/M criticized wrongly

Dear Editor:

In the last issue of The Observer, there were two responses to the article by S/M ACES. Before I read them, I thought that would be a good thing. There were a lot of points in the article that needed criticism, e.g. the implied argument that all sex is good and empowering except for "vanilla" heterosexual sex which is "shitty" and "oppressive." However,

continued on page 11

continued from page 10
rather than criticize the article, Mark Delsing and Matt Apple both chose to attack S/M itself - a much less tenable position.

Matt Apple's article is obviously intended to be humorous. Through the veil of sarcasm, a clear position comes through: "I would not want to engage in S/M activities." The answer to that is: so what? O.K., so you don't "spend every waking day fantasizing about... being whipped for a few hours." What relevance does that have to people who might have that fantasy and want to act it out? That's like arguing that Mozart was useless because I never have had an urge to listen to him. Sex, much like music (and yes, ice cream), is a matter of taste. Matt's personal distaste for this "flavor" seems irrelevant to the whole issue.

While Apple's article comes off as a thinly disguised attack on the idea of S/M, Mark Delsing doesn't even bother with masking his views. He starts out by stating that S/M ACES is unworthy for convocation funding. Well, who died and appointed you convocation god? If a group of people want a club to exist and if the club is open to the Bard community and plans events for the Bard community, then they have just as much right to be funded as any other group of students. For that matter, I recently heard our treasurer marvelling at how much they had accomplished with their budget. S/M ACES has regularly been holding workshops this semester. Yes, they are all about S/M, but all of Trek's activities are about science fiction. If Mark suddenly develops a distaste for SF, are they the next to go?

More importantly though, Delsing equates S/M activities with sexual violence. There is a huge and obvious difference between these two. It is the same difference between sex and rape. That difference is consent. If Mark cannot see the difference between two people acting out a mutually agreed upon fantasy and one person forcing their will upon another, then his distaste for S/M can be described as blind prejudice.

What seems to be the underlying problem here is the inability to generalize beyond one's particular viewpoint. S/M ACES come across as saying, "We enjoy S/M, so everyone must. If you don't, then you're repressing yourself." Matt and Mark are saying, "The idea of S/M disgusts

us. If you enjoy it, then you're fooling yourself or just plain sick, not to mention a potential rapist." I think both of these groups need to learn that their desires are exactly that: *their* desires. Then maybe they would stop criticizing the rest of us for our desires, be they S/M, the missionary position, or just ignoring the whole thing and curling up with a book.

David Steinberg
a not particularly enlightened

Criticize hair, not S/M

Dear Editor:

I know only a little about S/M, and I am not a member of S/M ACES. I find their article in the April 8th *Observer* to be thoughtful and informative. They do make some assertions that I think are very debatable, and some sections aren't written as clearly as they might have been. Their "vanilla" comment isn't in the best spirit. However, I would like to thank them for a piece that was, on the whole, positive and honest. It offers much to think and talk about.

The two responses in the April 15 *Observer* were disturbing. I find them to be mean-spirited and shallow. They thump and thunder, yet the writers display little understanding of what the S/M ACES actually said. What the group says may be right, may be wrong, or may be something we have no right to judge. It seems that Mr. Apple and Mr. Delsing are making no sincere attempt to listen thoughtfully and understand, and that is a travesty of an intelligent exchange. I will not insult their intelligence by outlining the article here, but I will rather respectfully ask them to indulge themselves and read the article again.

I shall indulge myself and continue. Matthew Apple and Mark Delsing, you are not smarter than I or the S/M ACES. Nor are you more righteous. Your (mis)interpretations of the article consist largely of insults born of ignorance about S/M, self-righteous moralistic ire, and simple nastiness. Your articles suggest you have closed and narrow minds. You write with shallow negativity. Such thinking achieves nothing. There are so many uncomfortable, profound, and pertinent questions to be explored. Your articles beg these and

offer little that is of value, positive or negative. Why do you react with such pointless hostility? For sure, there are valid criticisms to be made of the S/M ACES article, perhaps of the organization itself. Perhaps there are valid criticisms to be made of both your haircuts. Now do you understand what I mean by shallow and mean-spirited insults? I happily retract my insult; your haircuts are no worse than mine. I just want you to see how your articles might be perceived by someone who listened to and tried to understand, though had not necessarily agreed with, everything the S/M ACES were trying to say. Anyhow, how could I really make fun of your haircuts? I'm going bald.

Respectfully,
Chris Elliot
An Equal Human Being

More on S/M

Dear Editor:

In response to the two articles that were printed in the "Another View" section of the April 15th issue, I would like to say a few words...

First, as a bottom and a top in a long-standing S/M relationship, I am proud of my ability to stretch my own and my partner's sexual and physical limits. To give yourself to another person and for them to give themselves to you requires a trust, a level of communication and a consensual understanding that is not present in many other relationships.

Secondly, as both spoke of S/M as a manifestation of sickness and of its practitioners as those who "like to add to the already appalling amounts of domestic violence by practicing it for sexual pleasure," please permit me to illuminate the issue for you. S/M is not a form of rape, sexual battery, or any other non-consensual violent activity. Sexuality is a very complex and personal issue and cannot be reduced to a "pop-psychology" view of sick or healthy, right or wrong. Erotic power relationships can be exhilarating and cleansing. If you do not feel that you, personally, can gain from participation in an S/M relationship, feel free not to, for, as I will stress again, such relationships are based on an understanding between consenting adults.

Regarding the comment by Mr. Delsing that there exist plenty of

groups for us "deviants" and S/M A.C.E.S. (Sexual Minorities Aligned for Community Education and Support) is simply unveiling our sickness in and around "P.C.-double talk," I would like to point out that S/M A.C.E.S. was founded because there were people that felt they were not represented and/or wanted support that could not be found in other groups (i.e. B.A.G.E.L. or The Women's Center). The Student Activities Fee provides a pool from which to allocate funds to specific and structured organizations which address student concerns. S/M A.C.E.S. is funded to provide information, events, and support for members of a greater whole, the Bard community. Fortunately, the Bard Planning Committee does not conduct itself as now does the N.E.A.

Lastly, it seems that both articles assumed the majority of S/M relationships to be male-dominant/female-submissive. Thankfully, this is not true. S/M is one of the spaces where heterosexual, homosexual, and bi-sexual people can work through and break through these culturally pervasive power positions.

As both authors seem to have a strong opinion on these issues, please take the time to educate yourselves. Refer to the reading list published at the end of the original article.

Thank you,
Sarah Ward

Choices, choices

Dear Editor:

To the subtle anti-abortion/anti-woman "Another View" column of April 5: If you had listened a little more carefully you would have deciphered the cries of hundreds of thousands of women dying of illegal abortions. Poor women...rich women...Black...White...young...old...all crying out in pain from the harsh chemicals, utensils and the everpresent twisted hanger. These women had lives - and they should have mattered...but they didn't. NEVER AGAIN! "They knew what had happened but could not understand why." (from the article...) To imply that the fetus has the capability to wonder about what is going on is ludicrous. "...without reason." ...I don't think

so!! Every woman has a perfectly good reason for acquiring an abortion - whether she was too young or too poor to care for a child or if she decided that for HER OWN PERSONAL REASON this was THE RIGHT CHOICE FOR HER, the issue remains HER CHOICE! Women are not breeding machines. The cutting off of abortion rights signifies dominance over the woman's body, as well as an intrusion, both of which WILL NOT BE TOLERATED! Not only is abortion a woman's right to a choice, but it is a pertinent women's health issue that is strongly connected to overpopulation and environmental issues. Abortion IS a part of family planning, and the CHOICES a woman has. Without proper family planning (availability of contraceptives and access to safe abortions), not only are the basic rights of a woman strongly violated, but the overpopulation crisis will continue.

When a country's population grows to an uncontrollable size, its resources are depleted on a much larger scale. This affects not only the country of origin, but the world as well. By advocating an anti-choice stance you align yourself with the same kind-hearted souls who wish to outlaw ALL the forms of contraception! When you've eliminated ALL the CHOICES what CHOICE does that leave a woman??? If you believe this is a "pro-life" view, you are more ignorant than you appear!! Women must be allowed to control their own bodies (AND MARK MY WORDS, WE WILL!!!!). No one has that right but US! CHOICE must be made available to every woman in the world, not only to ensure her health, but her FREEDOM and SELF-RESPECT!

Women should not be condemned or made to feel guilty over their CHOICE to an abortion - and that CHOICE should be provided in a healthy, safe atmosphere. Your "report on the march" is fiction - pure fiction! Think about the women's lives that have been taken - how "pro-life" is that??? Or does a woman's life simply not mean that much to you? What about childcare after the birth? or does the child not matter after it's born? What about YOU STAYING THE HELL OUT OF OUR BODIES, OUR BUSINESS, OUR LIVES...and there are no "or"s in that!

Most sincerely,
Hellin Kay

BARD COLLEGE: APRIL 23 - 29, 1992

WEEKLY COMMUNITY INFORMATION

Black Center for Curatorial Studies:

Passions and Cultures: Selected Works from the Rivendell Collection, 1967-1991. A survey of paintings, sculptures, photographs, and other works from the permanent collection of the Center. Two smaller galleries exhibit prints by German Venegas and Nahum B. Zenil and a video installation by Bill Viola. Regular gallery hours: Wednesday-Saturday, 1:00 PM to 5:00 PM.

Aids Committee Benefit:

April 27, Monday in the Olin Auditorium at 8:00 PM. Featuring faculty performers including Peter Hutton, Leon Botstein, Chris Markle, Albert Reid, James Ronan and others, including a special guest appearance by the Natural Science Faculty.

Film Department

Program in International Education (E. Europe Cinema):
On April 30: (Preston Film Center, 7:00 PM): Prof. Laszlo Santha, of UCLA Film Studies will present a program of *Hungarian Avant-Grade Films* on video.
On May 7: (Preston Film Center, 7:00 PM): Dr. Richard Kluszczyński, Prof. of Film and Video at the University of Lodz and Curator for film and Video Center for Contemporary Art in Warsaw, will present a program of *Polish Avant-Garde Films* on video.
On May 14: (Upstate Films, Rhinebeck, 9:30 AM): Peter Rado, a Romanian film writer and critic, will present the Romanian feature film, *Reconstituirea*, by Lucien Pintilie.

Dance Club Workshop:

The Dance Club presents an open workshop in a movement technique called contact improvisation. Everyone is welcome. No dance experience is required. The Dance Studio/The Theatre on Sundays from 4:00 to 6:00 PM beginning March 1 and going until May 3.

Blum Art Show:

Sixties Graphics: Culture & Counterculture will be on view at the Edith C. Blum Art Institute from March 18 through the summer. The Blum is open noon to 5:00 PM and closed on Tuesdays.

National Endowment for the Humanities:

There is a National Endowment for the Humanities (NEH) poster on the bulletin board outside of the Dean of the College's office which describes NEH Fellowships and Summer Stipends. Application deadlines are June 1st for 1993-94 Fellowships and October 1 for 1993 Summer Stipends. Please stop by to review this poster.

Henderson Computer Center

Extended Hours for Senior Projects
 In order to help you out with your projects, the Henderson Computer Resources Center will have

extended hours during the last two weeks of April. These hours will be as follows: *Sunday, April 19 - Thursday, April 23, 9:00 AM to 2:00 AM* and *Sunday, April 26 - Tuesday, April 28, 9:00 AM to 2:00 AM*.

Services for Christian Students:

Sundays:

8:30 am: Ecumenical Service, Bard Chapel
 10:00 am: Van to St. John's Episcopal Church and St. Christopher's Catholic Church (meet in Kline parking lot)

Mondays:

7:00 pm: Singing and Worship
 7:30 pm: Bible Study/Prayer Group (both in Bard Chapel Basement)

Wednesdays:

9:00 to 10:00 am: Singing and Worship (Chapel)

Transportation Schedule:

Friday: Rhinecliff

meet at Kline at 8:00 pm for the 9:11 pm train

Poughkeepsie

meet at Kline at 6:00 pm for the 7:13 pm train

Saturday: Hudson Valley Mall. Meet at Kline at 5:45 pm, returns at 10:00 pm

Sunday: Rhinecliff: Meet the 5:52, 7:17 and 11:07 pm trains

THE WEEKLY COMMUNITY INFORMATION NEWSLETTER IS BROUGHT TO YOU BY THE DEAN OF STUDENTS.

CALENDAR OF EVENTS: APRIL 23 - 29, 1992

THURSDAY	FRIDAY	SATURDAY	SUNDAY	MONDAY	TUESDAY	WEDNESDAY
6:30 pm BBSO meeting Kline Committee RM 7:00 pm Model U.N. Meeting 7:00 pm International Relations Club Kline Commons 7:30-10:30 pm Peer Tutors Third Floor Aspinwall	12:00 NOON Calendar Deadline Dean of Students Office 5:00 pm Observer deadline for outside submission 6:30 pm Jewish Students Organization, Shabbat Services Bard Hall		8:30 am Worship Service Chapel (See Above For More Information and other services) 4:00-6:00 pm Dance Workshop Dance Studio 7:30-10:30 pm Peer Tutors Third Floor Aspinwall	3:00-5:00 pm Poetry Room Open Olin 101 6:00 pm French Table College Room Kline Commons 6:30 pm BBLAGA meeting Kline Commons 7:30-10:30 pm Peer Tutors Third Floor Aspinwall 8:00 pm Aids Committee Benefit Olin Auditorium 8:30 pm Observer writers' meeting Third floor Aspinwall	6:00pm Coalition for Choice meeting President's Room Kline Commons 7:30-10:30 pm Peer Tutors Third Floor Aspinwall 7:30 pm AA Meeting Aspinwall 302 8:00 pm LASO Kline Commons Committee Room	5:00 -7:00 pm Russian Table Kline College Rm. 5:45 pm BBSO meeting Kline Committee RM 6:30-8:30 pm Poetry Room Open Olin 101 7:30-10:30 pm Peer Tutors Third Floor Aspinwall 7:30 pm Scottish Country Dancing- Manor House

PASSIONS AND CULTURES: WORKS FROM THE RIVENDELL COLLECTION -On view at the Black Center