

Bard College  
Student Newspaper Archive  
(1895-1999)

All Rights Reserved. Copyright © 1999 by Bard College

# OBSERVER

Vol. 102    No. 21    April 19, 1995

Page 1	Internet Access Expands Login from the comfort of your room Pedro Rodriguez Student Assaulted [Rape] Loshua Ledwell
Page 2	Security Update Linnea Knollmueller News and Notes The week in review Pedro Rodriguez
Page 3	My Two Cents Michael Poirier
Page 4	What's What The ruin and moral failure of Bosnia Bard Spring Returning this episode, Colby, from "unbard love" Sean O'Neill
Page 5	Giant Weekend for Tennis Meanwhile, recreational softball is in full swing
Page 6	The X-Files Review of a cult favorite Helder Mira
	Letters
Page 7	More Letters Classifieds and Personals
Page 8	Calendar

"Now with Nutrasweet®"

Place first class  
stamp here.  
Regular rate \$4.52.  
International  
subscriptions may vary.

# The Bard Observer

Volume 102  
Number 21

Bard College, Annandale-on-Hudson, NY 12504

April 19, 1995

## Internet access expands

*Login from the comfort of your room*

By Pedro Rodriguez  
Managing/ News Editor

That Bard College expanded its Internet access via the Henderson Computer Center about three weeks ago is fairly common knowledge. Bard has had access for a few years at select locations like the Levy Economics Institute and through the Bard BBS at the library. About three weeks ago, Bard College took a further step which fewer students are aware of. Students can now access the Internet from their rooms.

For access, students need a computer (of course), a phone line, a modem, a communication program and a valid Bard Internet account. Visit room 302 at the top of the Henderson Computer Center to sign up.

The Henderson staff recommends potential users read *Introduction to the Bard Academic Computing Systems*, *Logging In and Logging Out*, *The First Login* and *Tips on Password Security*. All of these should be included in the packet sent to all Internet account applicants.

The computers on either end of the phone line—the server at the computer center (the Academic Computing system) and the user's—need identical communication parameters for a successful connection. The Bard Academic Computing system uses the following parameters:

Baudrate (speed): up to 14400  
Parity: none  
Data bits: 8  
Stop bits: 1  
Duplex (local echo): full (no

local echo)

Terminal emulation: VT100

The Bard system is equipped with a total of 15 phone lines. Six of them are for student use; the other nine are reserved for faculty and staff. There are two phone numbers, one for each group of the Bard population. Calls to one of the phone numbers will be distributed over its lines, until all are in use, after which there will be a busy signal emitted by the user's modem probably followed by a NO CARRIER message on the computer screen.

The phone numbers are:

Faculty and Staff User Accounts (914) 758-7622

Student User Accounts (914) 758-7623.

Bard has full Internet access, beyond that of paid services like America On-Line and Prodigy. Where those systems have several sights around the country, limited in capability, Bard's full Internet access provides four services: E-mail, Inetlib, Gopher and Lynx.

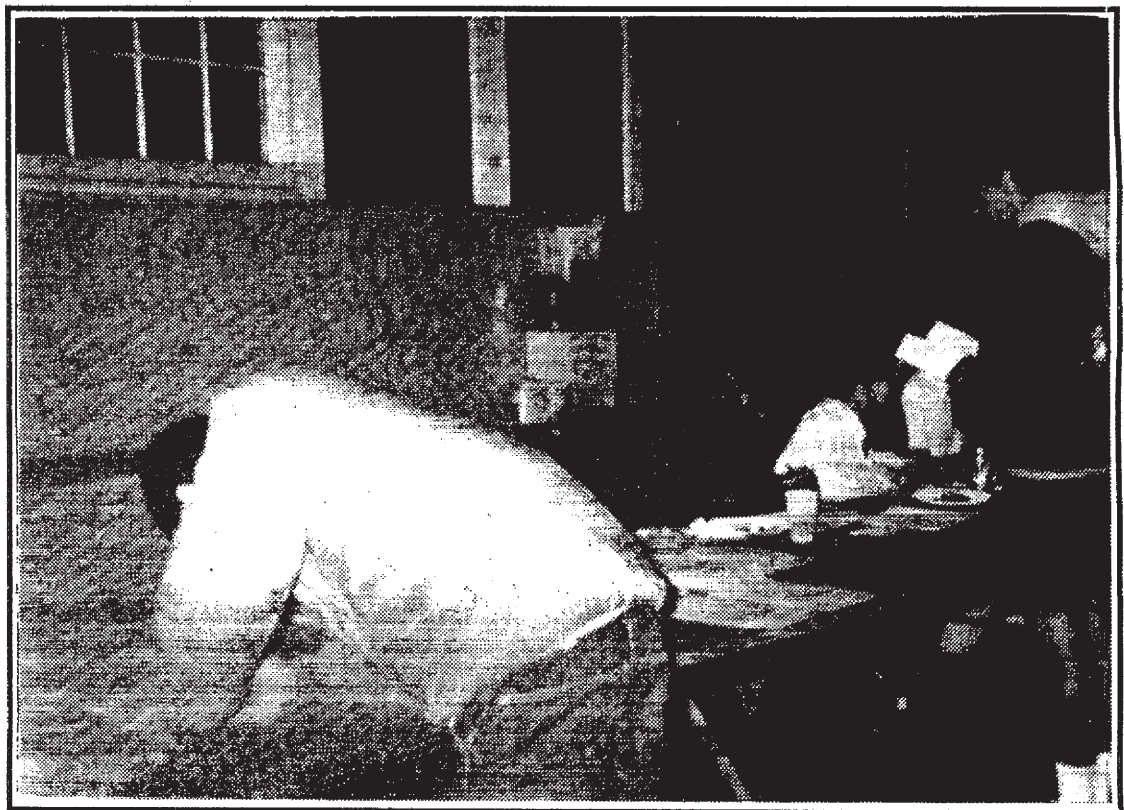
E-mail allows users to send computerized mail, as it were, between computers hooked up to Internet.

Inetlib provides access to library catalogues, including the Library of Congress, though not the Bard library. Such a system proves too costly at the moment.

Gopher, born during the 1980's, is the precursor of World Wide Web. It works on an ASCII format—a black screen with nothing but text. Gopher handles all types of information.

World Wide Web, like Gopher, is worldwide—hence the name—but includes graphics on an ANSI format. Through Lynx, Bard users can access the Web in its non-graphic format. The graphics require huge cables with greater capacity than mere phone lines. The Henderson Computer Center has been wired for this purpose.

Internet access from personal computers by modem is available 24 hours daily. Also available, in Henderson 302, is a three page photocopy with more complete and better instructions.



Sebastian Salazar resigns himself to his new room. Photo by Linnea Knollmueller.

## Student assaulted

By Joshua Ledwell  
Editor

On Thursday night, a Bard student was raped by an unidentified assailant. The attack took place near Feitler dorm at about 10 pm, as the student was walking to her home off campus. A man forced her off Annandale Road and raped her, Rhinebeck state police said.

The victim described the suspect as a white male of medium build and height, physically strong, with short hair. He may have been clad in a black sweat suit. As of this writing, the suspect remains at large, although police are continuing their investigation.

According to Dean of Students Shelley Morgan, the student, a 22-year-old woman, is hospitalized but "holding her own" and in good medical condition.

Dean Morgan said that there may have been other people walking on Annandale Road nearby at the time of the assault.

She urged that anyone with information about the incident or the rapist call Bard Security immediately.

The Dean was also careful to emphasize that the identity of the assailant is entirely unknown. "I would not assume that it was not a student," she said. Students should be alert and careful at all times, and not be lulled by the campus' rural seclusion. Men and women, Morgan said, should use the buddy system when walking around, or call Security for a ride.

To address emotional issues around the rape, Morgan noted that Bard Response to Rape and Associated Violence Education (BRAVE) and other groups will hold forums and meetings all week. Students can always come to the Counseling center, or to Morgan herself, with any concerns that arise. "This is a very traumatic event," the Dean said, even for students not directly involved. Anyone who feels a need for sup-

port should take advantage of college services.

Police investigators have been interviewing people at Bard to gather more information about the assault. However, Dean Morgan asked that students not talk with anyone asking questions unless they have been notified by campus Security.

Morgan said that Security always clears any police presence on campus in advance. People inquiring about the incident who "catch students off guard" therefore could be "TV people, or anybody," she said.

Along the paved path from main campus to Cruger Village, conspicuous posts for campus phones have remained bare so far this year. The phones, which were intended to help deter assaults similar to Thursday night's, are on order, according to Dean Morgan. There is no paved path or sidewalk in the area where the rape occurred.

*The primary  
purpose of a  
college is hard  
intellectual labor.*

—Dr. Bernard  
Iddings Bell,  
President of  
Bard College,  
1927



# Security update

By Linnea Knollmueller  
Features Editor

The past week has been eventful and harried for Kim Squillace and the rest of Bard's Security staff. Following the sexual assault near Annandale triangle Thursday evening, security has been working closely with the Rhinebeck state police. "We are following up any leads on campus, and turning the information over to them," said Director of Safety and Security Squillace in an interview Tuesday morning. She read a description of the assailant: "it is a white male of medium build, short hair, and possibly wearing a black sweat suit. Anyone with information should call the Rhinebeck state police at 876-4034, and should ask to speak with investigator Wayne Neal." Students are encouraged to use escorts when walking around campus, and security patrols have been stepped up.

"We've got people patrolling all the way to the bridge, even though it's not Bard property, because students live out there. And those students can call for a shuttle from their homes—they don't have to walk all the way to Feitler to get a ride on campus."

A student wrote a letter to the editor [see page 7] in which she complained about the lack of a shuttle escort on Saturday evening, because a driver had not reported for work. "It is true that shuttle driver did not show up," responded Squillace. "I spoke to the dispatcher who worked from 4 pm to midnight. After she got off duty, she took up a two hour shift driving the shuttle. Students will never not be picked up. They might have to wait a few minutes so that a security officer can take up the route of a missing shuttle driver, but would never be told they could not have a ride."

There are no emergency phones on the path to north cam-

pus yet, because of the switch to a new telephone system. This summer, when all the changes are made, phones will be added in that location.

Emphasizing her concern for the safety of the Bard community, Squillace added, "My door is always open for anyone who wants to talk about this, to vent their anger or frustration. I know that we at Security will take the brunt of the anger, but we're doing what we can. People should know that they can come and talk to Security." Rumors spreading about an incident in the Robbins dormitory Friday evening, April 14, may be exaggerating what actually occurred. "A former Bard student, not currently enrolled this term, had a medical/psychological emergency" said Dean of Students Shelley Morgan. The former student sustained injuries that were not life threatening, and is in stable condition.

Also Friday evening, Assis-

tant Director of Security James Lawlor and another security officer responded to a fire alarm in Obreshkove. "Someone had discharged a fire extinguisher into a smoke detector," stated Squillace, "to do something like this is very serious. This type of behavior cannot be tolerated. Not only did the extinguisher have to be refilled, but they could have broken the detector due to water damage." Anyone with information on this vandalism is asked to contact either Security or the Dean of Students office.

The gym has reported several thefts recently, so people are reminded to use good judgment when storing their belongings. Do not leave items on the benches or in unlocked lockers, even for a short time, to avoid losing them.

Monday, April 11, a student reported the theft of her Birkenstock sandals from outside her door. "If my memory serves me correctly, this is the second

student this year who has had shoes stolen. Students might want to keep things inside, especially if they are brand name items."

Another incident occurred on Wednesday, April 12, when a student in Tewksbury reported that someone had stolen her Sony CD player from her top dresser drawer. She was not certain if her room was locked or not at the time. "This is just a reminder, always lock your doors, even if you're leaving for a minute," suggested Squillace.

A final reminder for all art students with studio space, especially in Annandale House: "Sticks, rags, and solvents make for one heck of a fire," said Squillace, "please don't leave things out. Soiled rags should be disposed of in closed metal trash cans with no plastic bags. Spontaneous combustion could occur, and with all the flammable materials around, could be dangerous."

## News & Notes

### The week in review

By Pedro Rodriguez  
Managing/News Editor

#### Nuclear Arms Nonproliferation Treaty

The United Nations is trying to update the 1968 Treaty on the Nonproliferation of Nuclear Arms

(NPT), which took effect in 1970. The five world powers openly claiming possession of nuclear arms (the U.S., France, Britain, Russia and China) are aiming for a permanent end to their spread.

Representatives from 174 countries are to meet at the United Nations headquarters in New York City for a four week conference starting Monday, April 17, and ending Friday, May 12. Secretary of State Warren Christopher will open the proceedings Monday and Vice President Al Gore will speak Wednesday.

They will argue Washington's position and push for a majority vote in order to stave off calls by opponents for an extension rather than a perma-

nent ban. The nuclear powers fear that an extension would tempt potential violators.

Among the opponents are Indonesia, Mexico, Nigeria and Venezuela. The nuclear status of Iraq and Iran is uncertain. Egypt, the first Arab country to trade with Israel, refuses to sign the indefinite treaty unless it has "universality." Israel, which has nuclear power plants and is believed to have nuclear weapons, says it will not sign because of the uncertainty surrounding Iran and Iraq and the lack of peace in the Middle East.

The former Soviet republics Ukraine, Belarus and Kazakhstan have forsworn nuclear weapons, are dismantling them and returning them

to Russia.

Many opponents object that the nuclear powers have not complied with Articles V and VI of the NPT which state respectively that nuclear-weapon-states must bestow "peaceful applications of nuclear explosions" to non-nuclear-weapon-states and vaguely that nuclear disarmament must proceed in a timely manner.

Some also want binding pledges by the nuclear powers to protect non-nuclear-weapon-states in the event of a nuclear attack. The U.N. Security Council unanimously adopted a resolution offering what the *New York Times* called "qualified guarantees" to aid non-nuclear-states under nuclear attack.

Also on the agenda is the strengthening of the International Atomic Energy Agency in Vienna, Austria.

Shelling resumes in Sarajevo

Though sporadic, the shelling of Sarajevo, Bosnia-Herzegovina has resumed. The city has been surrounded for over 1,000 days. The airport is closed because passengers were being killed by sniper fire.

Corporal Eric

Hardoin, a U.N. Peacekeeper of the French contingent was killed Sunday, April 16, by what seems a Serbian sniper bullet. He is the second Frenchman to be killed there this week; Sergeant Ralph Gunther was shot earlier during the week, apparently by a Muslim sniper.

#### Israel vs. Hamas vs. PLO

Dressed as Arabs, Israeli security forces ambushed, shot and killed three members of Hamas, the Palestinian militant organization. The bodies were identified as Adel Falah, Jihad Ghulme and Tarek Natche.

Militant groups have staged terrorist attacks in an effort to foil talks between Israel and the Palestine Liberation Organization for the expansion of Palestinian self-rule in the West Bank. The attacks include two suicide bombings last week which killed seven Israeli soldiers and an American student from Brandeis Univer-

continued on page 3

great  
scores...

LSAT GMAT  
GRE MCAT

classes at  
Dutchess Community College  
Poughkeepsie, NY

CLASS STARTS  
GMAT-Mon. May 1st

GRE-Sat. April 22nd

LSAT-Sun. April 30th

MCAT-Tues. June 13th

Call 1-800-KAP-TEST  
TO REGISTER

KAPLAN

## MORE EUROPE FOR LESS

Four Seasons Travel makes Europe affordable...  
affordable air fares and lodging •  
Summer charter flights • Fly drive packages •  
Eurail passes • Tours and cruises •  
Student tours •  
Free passport photos \*

WHERE WOULD YOU LIKE TO GO?  
Call 914-758-0606  
9 South Broadway, Red Hook  
Four Seasons Travel

\* free with purchase of European ticket

Caribbean/Mexico  
\$189 r/t  
Europe \$169  
California \$129  
If you can beat these  
prices,  
start your own damn  
airline.  
Air-Tech Ltd.  
(212) 219-7000



## News &amp; Notes continued

continued from page 2

sity. P.L.O. chairman Yasir Arafat publicly agreed to talk with Hamas only if the organization accept P.L.O. commitments to Israel. Arafat also said that the terrorist attacks only allow Israel to demur Palestinian efforts.

Prime Minister Yitzhak Rabin stated that Israel will continue to battle Hebron, where a curfew is in effect.

## Turkey renews attack on Kurds

Turkey launched another major attack on a Kurdish stronghold Sunday, April 16. Approximately 25,000 Turkish troops flooded into the Tunceli Province to move in on the Alibogazi Ravine and the separatist Kurdistan Workers Party (P.K.K.).

Last month, Turkey began an offensive against Kurds in northern

Iraq.

## Indonesian censorship

Indonesia has redoubled its efforts to stifle dissident journalists. Three news magazines, including *Tempo*, have been shut down.

The Indonesian Government, under President Suharto, has disbanded the nine-month old Alliance of Independent Journalists—formed in response to censorship policies—and is forcing reporters to join the government-backed Indonesian Journalists Association. Those who refuse are effectively banned from the profession.

Arrests were made Sunday, April 16. The charge of "insulting the Government" carries with it a sentence of up to seven years' imprisonment.

ment.

## Vietnamese commandos

Shunned by Vietnam as traitors, over 50 Vietnamese claim they are commandos who worked undercover for the Central Intelligence Agency and the U.S. military during the Vietnam "Conflict" and ask for entry into the U.S.

The commandos were part of a failed operation to infiltrate Viet Cong forces. There were over 400, some of which survived for years in forced labor camps.

The U.S. does not believe their story despite recently declassified Pentagon papers which allegedly provide strong evidence in their favor.

In a related story, former Defense Secretary, under President

Lyndon Johnson, Robert S. McNamara has released a book, *In Retrospect: The Tragedy and Lessons of Vietnam*. 27 years later, he writes that he believed at the time that the U.S. should have withdrawn from South Vietnam by 1963.

## Dornan seeks presidency

Representative Robert K. Dornan of California entered the race for the Republican Presidential Candidacy Thursday, April 13. A member of the far right, Dornan is known for his anti-abortion/gun control/homosexual/sex education stance, and for his harsh oratory. He was

recently silenced in the Senate for saying that President Clinton "gave aid and comfort to the enemy" by protesting the Vietnam War.

LSAT  
GRE  
GMAT  
MCAT

THE  
PRINCETON  
REVIEW

800/2 REVIEW

The Princeton Review is not affiliated with  
ETS or Princeton University.



## My Two Cents



by Michael Poirier

Why is there no lighted path leading out to Feitler? Where are the emergency phones? What ever happened to the Bard Foot Patrol? Where was Security Thursday night? How could something like this happen on this campus? How could anyone do that to another human being?

The sexual assault on Annandale Road last Thursday night has filled me with questions. My brain and heart have been twisting in paroxysms of anger and sympathy, indignation and fear, disgust and determination.

It's easy for me, for all of us, to look for someone or something to blame for this incident. The impulse is to find a scapegoat to load off the responsibility of atrocity; to pick a target and heap on the blame until something, anything, changes and we can pretend to feel safe again.

But the push for blame is a defense mechanism, and it will not really alleviate our fears and mistrusts. Only one person truly deserves the blame and ire of this incident—the assailant himself.

And nothing we could ever do to him is going to change the safety conditions of this campus. The awful

truth is that we have to learn things the hard way. We've heard the statements before, maybe now we will start believing them:

*This campus will never be completely safe. All precautions are necessary.*

Placing blame is not going to change what happened, nor bring some miraculous aegis of security to this campus. However, it is dismally apparent that there is too much room for improvement, and that there are changes which we can no longer wait for.

The administration took years to finally complete the path out to Cruger Village. We are still awaiting the emergency telephones. Who knows what bureaucratic tangles and administrative delays have kept a path from extending out to Cahagen and Feitler?

*We have waited too long.* The College must start pulling some strings and putting people to work immediately. Concerns like phone wiring problems can be overcome with the proper technicians. The path, the phones and the lights are deterrents whose absence is unacceptable.

Furthermore, Security has been woefully understaffed for far too long.

With more guards available, campus safety can only increase as more patrols and more escorts become possible.

(The administration better not even think about whining about the lack of funds routine for these necessary improvements. One less Bard Center Fellow for greater campus safety is a question that should require no thought at all. Our tuition is being increased anyway; it is our right to demand that some of that money come back for our own protection.)

Student shuttle drivers: *show up for your shifts or lose your job if you don't find a replacement.* The campus shuttle is too vital a resource to depend upon the whims of a work-study student. There are plenty of other people who will do the job if you don't show up. And why can't we have a daily, late-night shuttle to take off-campus students home?

Finally, each of us must take some responsibility for our peers. Never walk around by yourself, and get a posse of friends to walk a buddy home. Offer to give somebody a ride if they live off-campus. And if you notice a Bard student (walking at night) from your car, see if they need a ride as well.

There are so many could-have-beens and should-have-beens that

might have prevented this sexual assault from ever occurring. It is too late to change the past, but it is never too late to make our future more secure. *If we learn nothing else from this, we must struggle to ensure that it can never happen that way again.*

The administration owes that promise of security to us, and we owe that solidarity to ourselves.

## Volunteer Opportunities

In order to provide an opportunity for students at Bard to involve themselves in social service programs, they must first be made aware of what is available. During the next few weeks, there will be articles highlighting several organizations that provide various services to the surrounding communities. These programs are also available through the Social Action Workshop: a collection of faculty, students and staff working to combine academic study and the experiences gained through social service. If you would like additional information or to speak with someone about the programs, please contact Rich Kelley in the Dean of Students Office, ext. 454.

## Scenic Hudson

Founded to protect, restore, and enhance the ecosystem, historic heritage and unique landscapes of the Hudson River, Scenic Hudson has been a crusader for innovative approaches to safeguarding the environment during its 30-year history.

Scenic Hudson triumphed in

the legal battle to prevent ConEd from imbedding the world's largest pumped storage hydroelectric plant in the face of Storm King Mountain. "The Scenic Hudson Decision," as the case is called in law books and journals, set extraordinary precedents by granting citizens legal standing in environmental disputes; launching a national environmental grassroots movement; and establishing environmental law as a new legal specialty. Language from the Scenic Hudson Decision was used by Congress to draft the country's first National Environmental Policy Act, the cornerstone of all environmental law in the U.S.

Five interlocking programs have emerged within the Scenic Hudson Valley program: air and water quality; legislation; historic preservation; safeguarding the riverfront; and public education. Scenic Hudson continues to work tirelessly—and with your help, they can continue to broaden understanding and appreciation of the outstanding natural beauty, ecological significance, and historic importance of the Hudson Valley.

## TIM HART AUTO RECOVERY

- COLLISION REPAIR
- GLASS REPLACEMENTS
- INSURANCE ESTIMATES
- FRAME STRAIGHTENING

24 HR TOWING

SHOP 914-876-1242  
HOME 914-758-3948

RT 199 WEST, RED HOOK





# What's What

## The ruin and moral failure of Bosnia

By Sean O'Neill

A decade or two from now, when people reflect on the world events that occurred during our undergraduate days in Annandale, the catastrophe of Bosnia is likely to be the most remembered.

"It is a gorgeous tourist country, whether in the Venetian towns of the Dalmatian coast, the ski resorts in the environs of Sarajevo, or the vineyards of Western Herzegovina around Mostar."

That is David Rieff's description from his new book, *Slaughterhouse*.

He writes that Bosnia is neither a civil war, nor a religious conflict, nor an example of "the inherent violence of the Balkan character."

Journalists, diplomats and intelligence analysts have concluded that mass genocide occurred in Bosnia, and that 90% of the genocidal actions were perpetrated by Serb forces against Muslims.

The people of Bosnia, non-nationalists and Muslims alike, are Europeans similar to those one would find in a cafe in Frankfurt, Zurich or Paris.

A quarter of a million of them are now dead and another million live as refugees.

The destruction is so close to Europe's famed cosmopolitan cities that the distance from Italy or Germany to Sarajevo, site of the longest siege in modern history, is about the distance from New Jersey or Rhode Island to Annandale.

More astounding than the proximity of mass genocide to idyllic small towns is the fact that many of the countless war crimes and human rights abuses could have been prevented by a committed Europe, U.S. and Russia.

Once thought, wrongly, that Bosnia was a continuation of "ancient ethnic hatreds." This, despite the fact that in 1990 one-fourth of Yugoslavia's population lived in mixed marriages, with practically non-existent rates of ethnic attack.

The truth is that, while the world was distracted with the Persian Gulf War, Communist leaders like Milosevic of Serbia and Tudjman of Croatia were desperate not to lose power in a democratic revolution. These men manipulated artificial ethnic tensions in a nation that was historically peaceful. Authoritarian control of the media, along with the repression of democratic opposition, re-created rivalries that had been comatose for forty years.

"You Americans would become nationalists and racists, too, if your media were totally in the hands of the Ku Klux Klan," argued one Belgrade journalist in *The New Yorker*.

Yugoslavia, similar to Canada, was a federation of six provinces. The biggest of the provinces was Serbia. Britain and France like this province because it alone of the six had historically sided with them in the two world wars against Germany. Russia likes it, too, be-

cause of its similar linguistic and cultural heritage. These great powers have ignored the policies of Serbia's (effectively) authoritarian leader. He openly wants all ethnic Serbs to live in one state and agrees to the murder of anyone who obstructs Serb destiny.

In 1991, a second province, Croatia, followed the lead of another province and declared itself independent from the Serbian-dominated Federation. Serbia went to war against it.

Croatia has been led by a man who is only slightly less fanatical in pursuing his own form of ethnic nationalism.

The resulting war is primarily between Serbia and Croatia, with the leaders of each nation claiming ethnic supremacy over all others. (The Croat leaders, for example, insist that only light-skinned members of the United Nations may walk on their land.)

The war's greatest travesty, though, has been the assault of the democratically elected, multi-ethnic government of Bosnia. Civilians have been targeted, mostly by Serbs. And when not shelled at, raped, shot at, or besieged, these mostly unarmed people were placed in internment camps under inhumane conditions. Muslims were killed for being Muslims.

Genocide ought to be recognized by the international community for what it is, where it is. The perpetrators of genocide for supremacist goals must be penalized by boycott and

punished by force.

The Serbs, unlike most of the Bosnians, are people with political aims not shared by the West. The West's arms and oil embargo should have been selectively used against the Serbs and not have included Bosnian Muslims.

Winston Churchill once said that "the government of the world must be entrusted to the satisfied nations, who wished nothing more for themselves than what they had."

Yet the satisfied nations must earn the trust of the weak by showing that they can govern wisely. They have not yet done so.

Aerial strikes in April 1992 could not have frightened the Serbs from further incursions into Bosnia, as scholar David Gompert has argued.

Today, sanctions should be rigorously applied against Serbia for as long as necessary until its regime collapses. Air strikes should be used, too, if Serbs attack Croatia or Macedonia, or if Croatia imitates their foul behavior.

The principle that external and internal borders can be altered only by the mutual consent of the parties must be upheld whenever possible. A blockade of Serbia is the least dismal choice to take to achieve the least dismal of ends. It will require a sustained effort to prevent an expanded war, as well as resistance to the short-sighted desires of Britain, France and Russia. Firm resolve may discourage ethnic nationalists from warring elsewhere.

# Bard Spring

## Returning this episode, Colby, from "unbard love"

by Sean O'Neill

April 1997

To the Committee on Hirings:

Hello! My name is Colby Sprague and this is my application for a job at Bard College as a professor.

I was graduated from Bard in May of 1995 and have just completed my Masters degree in Tibetan culinary studies at the University of Lhasa. I am flattered at your offer for me to become a professor in the multidisciplinary Obscurantism Program at Bard.

I cannot accept, however, unless my wife, Nadine Seefeldt, also receives a professorship. She is a doctoral candidate for monastery music studies, and her *curriculum vitae* is attached. As a winner of the prestigious Philip Morris Fellowship, she has much to offer the faculty in her knowledge, piano skills, vim and vigor.

1997 has seen the flourishing at Bard of such language pursuits as Sanskrit, Gaelic and Yiddish, along with such "academic consortium events" like Urban Studies and Project Social Action. It pleases me to learn that the college has yet to institute Japanese studies, or a similar program. Bard should never capitulate to a mainstream educational agenda.

I heartily agree with President

Hernandez that the college needs to have Tibetan culinary studies to fill a gap in its course offerings.

An understanding of the main staple of Tibetan diets, *tsamba* — a kind of barley meal — as well as a comprehension of its various manifestations as wet *tsamba*, dry *tsamba*, *tsamba* tea, and *tsamba* patties with yak butter, will supply students with new paradigms with which they can challenge the capitalist, Big Mac hegemony.

My dissertation will detail the use of *tsamba* by Tibetan nomads as a cultural weapon against authoritarianism. Its tortuous reasoning mirrors the paths through Tibet around gorges, waterfalls, pastures, and rocks.

In my thesis, I employ the concept of concentric circles to describe the interpersonal relationships of Tibetans within — to import an elitist term — a "restaurant." Interesting class and status realities can be discovered by examining the propinquity of various eaters to the main *tsamba* dish at a traditional meal served on the Chang Tang plateau. Llamas, dressed in their spare, charcoal colored robes, are the Buddhist leaders who sit closest to the *tsamba*, as would be expected from their venerated position in society.

The next ring of people is the *drokba*. These wandering shepherders are recog-

nizable in their gaudy, embroidered crimson headpieces, their perfumed russet coats bound tightly at the waist, and their kneeboots in red and green colors.

Yaks follow in the outer concentric circle, darting and vaulting with their fluid balletic grace around the fire used for cooking. These animals are valuable, as are the shaggy ponies laden with wool.

Students can apply the insights of these concentric circles to their own social experiences. The upcoming *menage-a-trois* party is one such opportunity. (I congratulate President Hernandez for accepting a \$50,000 grant from the Anheuser-Busch Foundation for Youth Harmony to pay for the newly endorsed event.)

At the *menage*, beer is the equivalent to *tsamba*. The innermost circle is formed by those souls who pump the beer kegs, beside the disk jockeys who play the music. These individuals have high status within society, as evidenced by their high rates of sexual coupling. The keg-stand workers and music purveyors can be identified in their traditional dress of T-shirts, ripped jeans, and Birkenstocks. Like many Tibetans, several of these students have lice in their hair. The success of their "beer dispersal action" is measured by the duration of time expired

before they pass out.

The next social tier consists of the dancers, those students who exchange green pieces of paper for a chance to writhe, wiggle and cavort in a confined, darkened mating space. These are bounded by a third circle, that populated by security forces, dressed in faded blue uniforms, and administrators, who favor darker colored outfits, all of whom command the least respect and interest in the society.

My wife Nadine's application speaks for itself. She recently created the composition "Cacophony at Three Miles Above Sea Level." Her inspiration for it came when riding on a gaily-caparisoned mule. In the piece, she tries to transcribe into musical notation her feeling when confronted with the *geshe*, or great teacher, sitting cross-legged on the stone floor of an ornate room in the Sera monastery, filled with *thangka* paintings of Buddhas, intricate *mandalas*, and fierce demons. A recording of its performance is enclosed.

In closing, I note that there is no more fervent longing among alumni than to return to Bard, once our undergraduate longings to depart are fulfilled.

Appreciatively,

Colby Sprague



# Giant weekend for tennis

*Meanwhile, recreational softball is in full swing*

By Josh Bell  
Sports Editor

If you will think back to the last copy of the Bard Observer, you will remember that I told you that Men's Varsity Tennis was off to a great start. Accordingly, I now have the complete results in from the April 10th meet against Mount Saint Vincent College.

As we guessed, the Blazers destroyed and humiliated their opponents by winning eight out of nine.

Playing seed number one, Andreas Tschung defeated Vincent's Ian Brett, with scores of 6-0 and 6-0. Other triumphant performances came from Tor Loney, whose opponent also won zero of his matches and Eugene Kublanovsky who skillfully kept his opponent to three wins.

The overall record for the Blazers is now, officially, three and one.

Moreover, for all of you out there who thought that the Blazers were slacking off, the team has an incredibly long week ahead

of them. They have matches this Thursday at home against Western Connecticut State University. So please come and cheer them onto another victory (it should be noted that attendance has been rather small this year at Varsity athletics), so come, please come. The team could use your support!

Friday, the Blazers will travel to SUNY New Paltz for an away meet. Saturday, there is a 2 P.M. away match against Stevens Institute of Technology.

This intense display of sporting expertise will be conclude on Sunday the 23rd at the Independent Athletic Conference Tournament at Stevens Institute of Technology. Also look for a make-up match between Bard and the New Jersey Institute of Technology. Details and times are available from the Director of Varsity Athletics.

That's about it for this week's tennis news, I would like to wish the players good luck for their tough week. Remember, it's a game so, have some fun, but still kick their butts.



Michael Poirier prepares to blast one out of the park. Photo Josh Ledwell

## Real World Sports

By Josh Bell  
Sports Editor

Alright, just when you thought it was safe to go back to the ballpark, the umpires go on strike. On a professional level, I fully believe that they should get all of their demands. But, on the level of a fan, I just want the season to start with all of the professional staff it should have. The umpshave already been replaced with umpires from the higher minor leagues, so the only question remaining is whether or not the players cross the picket lines and play.

My guess is that they will, because they are all jocks who just want money (this was proved to me by ex-Red Sox Wade Boggs who said that he thought it was going to be great to play for the Yankees, and that the rivalry between the two was mostly a myth. Up yours, Wade.) Moreover, it is hoped that the season will start on time, with the umpires satisfied, but you never know what's going to happen. Go negotiators.

In hockey news, Wayne

Gretzky became the only player to score 2,500 career points. Gretzky is the league's all-time scorer with 813 goals and 1,687 assists. Accordingly, with his total points from regular season and play-off NHL play and his points from the World Hockey Association, he is only 24 points away from the 3,000 mark. Go Wayne.

In distance running news, Cosmas Ndeti of Kenya won his third Boston Marathon this week. Ndeti is the only international runner to ever manage this feat, and one of three people to ever win three consecutive marathons. The women's race was won by Uta Pippig of Germany, who also won last year. Consequently, this is the first year in which defending champions repeated. Go Runners.

Also, for all those interested, Hoe Bowl Country Lane's tournaments are now starting. All interested bowlers should call to reserve space now! Please call 452-1645 for more details. Go Bowlers.

By Josh Bell  
Sports Editor

Here is the latest report from the halls of Recreational Softball. With every division registering winners and losers, the season is off to a tremendous start. The Western Division still has not had an official game, although the Zebraheads won their first game against Super Diva by a forfeit. Over in the Eastern Division, Slut Trash pulled an easy victory, by forfeit, against The Blumfield Rainbows. The G.A. Enlightenment beat the Distinguished Scientists Softball Series in a close game of 4 to 3.

In the Southern Division, the once mighty St. Tula lost their second in a row to Graceland, by a score of 8 to 7. The game can only be described as a close one, with the loss a direct result of some bad third inning pitching by the filmmakers.

The other game played, was between Bountiful Crop and KEG: the (will someone please tell me what the hell it

means) Demain Outfit. Crop won the game with a score of 3 to 1, a triumphant win for the team who wanted me to say, "we are an excellent crop, ready to be harvested."

In the Northern Division, whose first games were cancelled due to weather complications, played their make-up games on Saturday the 15th. The first game between Keynes' Curse and Wood Warriors was a dramatic six inning game ending with a final score of Woods 8 and Keynes 3. In their second game the Woods Warriors fell to the team Fashion Rules by a score of 12 to 7.

The second game for Keynes' Curse demonstrated the team's need for fielding and batting practice, by their 34 to 7 loss to the Unicorns. According to a team member, "we are going to come back, even if it involves watching Field of Dreams, Ted William's instructional video on batting, and listening to John Fogarty's "Centerfield" for hours (we

also might practice)." Good luck economists.

Over in the Athletic Division, the Tony Danza Bonanza beat the American Dream 16 to 10. Other Athletic league and Recreational League games that were postponed will be played later, and team members should contact the gym or their captains for more information.

In non-softball news, the gym is still open. So go and use it. Also, coming May 5th to Stevenson Gymnasium, Peak Performance Sports in New Paltz will be holding a ROLLERBLADING demonstration/clinic for all interested students. The time is two to five P.M. at the gym so go and see what rollerblading can be like. Further information is available from the gym later this week.

Tomorrow is Thursday, meaning that it is Thursday Night Madness, so go and enjoy all aspects of the gym until the wee hours of the morning. Until later, good luck to all softball teams, and be kind to the prospective students visiting this weekend.

## Rec League Softball



# The X-Files

## Review of a cult favorite

By Helder Mira

Honestly, I have been meaning to go to the movie theater to review a film for the past two weeks. However, due to moderation papers last week and having to finish reading a novel for class this weekend, my viewing time has been strictly limited. Allowing myself to only watch one thing each weekend, I chose something I really wanted to watch, a cult hit TV show *The X-Files* (Friday, 9pm, Fox network).

Being up at school sans television set, I have been very behind on my TV viewing (and have almost completely lost interest in the boob tube and its few offerings). So it was to my delight when my friends introduced me to this show.

The series revolves around a department of the FBI which investigates paranormal activity, from UFO sightings to hauntings to mutant parasites. While many of the story ideas are based on

films from the science fiction/horror genre (such as John Carpenter's *The Thing*, *Alien*, and *The Exorcist*), the writers have been able to bring interesting twists to the stories which make the show fresh and original. Some of the encounters have included a mutant flukeworm which grows to be six feet tall, various aliens, a town of killers created by subliminal messages, a possessed boy, and a satanic school board.

The cast consists of two primary characters: the UFO-hunting Fox Mulder, played by David Duchovny, with Gillian Anderson as his skeptic scientist partner Dana Scully. Not since Batman and Robin has there been such chemistry between a crimefighting duo.

Duchovny gives a wonderful buzzcut, square-jaw caricature of FBI agents with his monotone voice as he questions suspects about the supernatural (Mulder has been a believer since his young sis-

ter was abducted by aliens). Questioning Mulder's off-the-wall theories is Anderson's down-to-earth character, who searches for logical solutions rooted in science.

The two have an everyman, All-American beauty to them which allows the audience to relate to them. The pure lack of romantic tension adds to the chemistry of their relationship.

Complementing the scripts and acting is a very unique visual style, which makes it resemble a work of film noir. The mood is created with intense shadows and extreme angles. Lighting consists of strong blue and green shades, creating a very dark atmosphere. The eerie atmosphere is strengthened by the musical score, composed of striking chords.

The show exceeds the bounds of most TV shows, but not as vulgarly as does *NYPD Blue*. Its horror and violence come from the unseen, which makes it all the more unset-

tlung at times. In last week's episode, a two-year-old was brutally run over by a train. Not long afterwards, Scully is lowered into an elephant to perform an autopsy.

One drawback is the constraint of an hour show and having to solve the mystery by the end of the hour (it usually ends up unsolved anyway). With the promise that this show has, it would benefit from working as a serial, such as *Twin Peaks* did. This aside, *The X-Files* is one of the few consistently good TV shows to come along in the past few years. Few shows carry the edge that this one carries and as long as *The X-Files* is on, there is one reason to own a TV set.

### Plugs

This weekend there will be two screenings (on campus) of films by two of my idols. On Friday night, the film committee will be showing *Ed Wood* by Tim Burton (ahhh).

Beautifully shot in black and white, the film portrays the sad story of one of Hollywood's worst filmmakers as he befriends a drug addicted Bela Lugosi (the truly worthwhile Oscar winner of the year).

Also being shown on Saturday, in Olin room 309, is one of Orson Welles' lost masterpieces, *F for Fake*. This documentary (also a disguised autobiography) takes a look at art forgery, film making, magic, lost dreams, and Picasso.

Welles sought to get as far away from *Citizen Kane* as he could, and did so in this film which examines the artifice and magic which is used to create films. *F for Fake* was the final film that Welles was able to complete. Both Welles and Wood were outcasts of the system known as Hollywood and I recommend both films highly.

Next week, I will have a new film to review. Until then, check out these shows.

## Letters

To the Bard community,  
We realize that there has been concern over the use of funds raised from the Shake Boutique Halloween party which was thrown last semester. We are printing this letter to let you know that, with your help, the Boutique donated \$550 to God's Love We Deliver. This is a not for profit organization which provides hot meals for homebound people with AIDS.

To show our appreciation, we are using the remaining funds to throw a free party! Watch for it. Thank you,

The people at Shake Boutique

\* \* \*

Ms. Aimee Lind  
Club Head, Shake Boutique  
Bard College

Dear Ms. Lind,

Thank you so very much for your generous contribution of \$550.00 to God's Love We Deliver, which we received on December 27, 1994. Your gift will be


translated into hot, nutritious meals, prepared with the freshest ingredients and delivered, free of charge, to men, women and children hungry and homebound with AIDS throughout the five boroughs of New York City and Hudson County, New Jersey.

Our files are filled with letters from clients whose lives have been extended and enhanced by the services that your gift supports. One note included the following thought:

"Thank you for helping me through the most difficult time of my life. Once in a while, in this troubled world, something wonderful comes forth. You have given me the strength to hope, as well as something to be thankful for."

God's Love We Deliver's ability to generate such hope—through the provision of life-sustaining meals—would not be possible without the kindness of donors like you, and we are extremely grateful for your partnership in our mission.

Best wishes,  
Kathy Spahn  
Executive Director, God's Love We Deliver



### WORD OF THE WEEK

By Mafé la Cunnard

THIS WEEK'S LETTER IS **M**

WHEN MIYAMOTO THE MONKEY<sup>1</sup> BECAME MIKADO<sup>2</sup> OF JAPAN THROUGH MÉSALLIANCE<sup>3</sup>, HE SET UP HIS MONARCHY AMONG HIS MIGNONNETTES<sup>4</sup>. WHEN HIS WIFE, MIKI, WAS IN MENOPAUSE<sup>5</sup>, HOWEVER, MAFÉ MIYAMOTO LIKED TO MASH<sup>6</sup> MELONS WITH HIS HEAD.

1. MONKEY ('mang-kē') n: a primate mammal other than man or ape
2. MIKADO ('mā-'kād-2') n: an emperor of Japan
3. MÉSALLIANCE ('mā-zel-yā's') n: a marriage with a person of lower social rank
4. MIGNONNETTE ('min-yō-'not') n: a garden plant with spikes of tiny, tiny violet flowers
5. MENOPAUSE ('men-3-pōz') n: the period of natural cessation of menstruation
6. MASH ('mash') v: to reduce to a soft, pulpy state

© 1995 the Panjandrum  
Definitions from: The Merriam-Webster Dictionary



## More Letters

Dear Bard Community,

I called Security on Saturday night to request a shuttle from the dance concert to Robbins, and found that there was none available. The shuttle driver did not show up and there was nothing they could do about it! This is insane. A campus wide alert is in effect and women have been warned to walk in pairs or use the shuttle service, and the shuttle is not in operation! Bard obviously cares very little for the safety of its students. I made it home safely, others might not have been so lucky.

Pamela Baumbarger

To the editor:

Not many days after my return from spring break I had what is called, within institutional structures, a "conflict in communication" with another student. In my attempt to secure a check from the convocation fund for the purchase of club supplies my budget request was delayed by the treasurer. Originally my anger and frustration was aroused because there seemed to me to be no legitimate reason for this delay. However, I had resigned to the idea of looking for an institutional resolution with my strong suggestion that the treasurer arrange a meeting between me, himself and the other two parties who would be necessary in achieving this end. This conversation took place in the main dining hall, shortly after Wood food service had closed its doors for dinner; the treasurer was eating a late dinner because of earlier engagements. As I prepared to leave

the dining hall, on the tail end of an extremely frustrating conversation, I requested that I might have a few words with the Chair of the Planning Committee. It was at that moment that the treasurer called me back over to the table at which he was positioned to inform me—in what I perceived to be an antagonizing tone and attitude—that I would not be able to resolve this matter with anyone but himself. At having been called back to confront, again, what I perceived to be an intimidation surrounding the original issue of a delayed convocation check, I indirectly struck out at the treasurer by sweeping his unfinished dinner onto the floor of the main dining hall. He informed me that he would report me to security as a result; and indeed he did. Had he asked for an apology at the time of the incident he would have gotten less than nothing, for I felt myself to be wholly justified in my actions. After having spoken to one of our local mentors I learned that I was justified in my anger, but not in my action. After having represented this position in a meeting between the treasurer and myself, arbitrated by the Associate Dean of First Year Students, I am prepared to say that although my anger was absolutely justified, my action was just as absolutely improper. Therefore I offer my apology to the institution and to the treasurer, for in all matters of "conflict of communication" there is always the important issue of context to consider. It was this context that I overlooked in my choice of action.

Milord Roseborough

## Editorial Policy

The *Bard Observer* is an entirely student-run publication. Submissions from the community are always welcome.

Letters to the editor should be under 500 words, and may be edited for spelling or grammar. Pieces for the Opinion pages will not be edited without the consent of the author. Only that which is slanderous or libelous will be denied publication. Anonymous submissions will be evaluated on a case-by-case basis for publication—but we prefer them to be signed.

Campus organizations are also invited to publicize their events free of charge in the *Observer*. Space on the Calendar Page is provided through the Dean of Students' Office.

The *Observer* is published every Wednesday while classes are in session. Only those items which arrive in campus mail, or to our office, the Friday prior to the next issue will be guaranteed immediate publication.

## Classifieds and personals

**ENTREPRENEURS:** Start your part-time business. Residual income monthly. No inventory, No retail sales, NO RISK! Sound intriguing? Call 679-4150.

**SUMMER SUBLETS** The Graduate School of Environmental Studies is looking for student housing for this summer, mid June through mid August. If you wish to sublet or rent, please call 758-7483 or, see Molly or Liz in Sottery 101.

Beautiful lake house to rent academic year 1995-1996. Situated on 1/2 acre, 20 minutes from Bard, 125' private lake frontage. Private dock, car port, finished basement with entertainment center, washer/dryer, 4 bedrooms, 2 baths, dishwasher, LR with fireplace, antiques, decks, views, passive solar. Responsible people only. No smokers, no pets. Call 212-595-8618.

Open, loft-like residential and/or professional co-op on Riverside Drive in a designated landmark area. Architect: H.L. Meader, built 1916, 1000 sq. ft., faces South and West, original ceramic tile floors. Location: corner Riverside Drive and 96th Street. Maintenance \$418.00. Asking price \$165,000 (negotiable). Owner will hold a partial mortgage. Call for fact sheet: 212-595-8618. Leave return fax number or address.

The *Bard Observer* seeks staff. All interested writers, photographers, copy editors, artists, cartoonists, etc. are welcome. Meetings are held in

room 84, Tewksbury basement, Mondays at 7:00 pm., or call 758-0772.

Need some spending money for the summer? Do you have a knack for appeasing large crowds? Do you have good organizational skills? Do you like Bartok? The Bard Music Festival needs people to do a variety of jobs over the summer including the two weekends of the festival (Aug. 11-13 and 18-20). If you are interested, please call Robin at 758-7410.

Interest has been expressed in a self help/support group for the gay and lesbian community to address HIV issues; specifically caregiving and bereavement, but not limited to those issues. If you would like to belong to such a group, contact Michael at 679-7411 or Dan at 339-9090 Ext. 113.

Looking for a two-bedroom apartment to rent in Tivoli, Barrytown, or Annandale starting June 1 through next school year. Please drop a note in Box 1340.

**Performers Wanted!** To strut your stuff at the Queer+ Coffeehouse on Friday, April 21 at 9pm, whether you're queer or just queer-friendly, whether you're a poet or musician or dramatist or diva. Contact Brent Armendinger via Campus Mail ASAP

Responsible student seeks summer housing in which to work on Senior Project. If you need a

housesitter or someone to sublet for June and July (I leave in August to study in India) please call Kathy Hoover at 752-7539 or drop a note to box 856.

**Wanted:** Boom Box/CD player. 752-7455.

**WXBC is ON THE AIR!** Your favorite radio station can be currently heard on 540 AM in Manor and Manor Annex, and will soon be available in Albee. Shows run nightly from 6:00 pm until... Make sure to read next week's *Observer* for a schedule of shows. —The Management

Vomit around a Kline toilet seat—who are you? Please stop. You are a) burning your esophagus, b) ruining your teeth, c) losing precious ions, d) disrupting the hydrochloric acid balance in your stomach, e) need I continue? I'm glad I'm not there anymore—making love to that porcelain goddess. I'd rather be so fat that I couldn't move to write this note but maybe it'll be in time for both of us.

Hey Psycho! Blue eyes under a brown hat—why do you stare the way you do? Signed, Curious but 100% "Not Interested."

You can stop "Running" away. I promise you that there will be no more responses to your INFANTILE behavior—so forget it!

Remember that Classifieds are free to Bard Students.

## Oops!

In last week's issue, the article entitled "Democracy Triumphant?" should have been credited to Joshua Ledwell. [If I don't toot my own horn, who will?]

## The Bard Observer

Editor-in-Chief  
Joshua Ledwell

Managing/ News Editor  
Pedro Rodriguez

Featured Columnist  
Sean O'Neill

Advertising Manager  
Michael Poirier

Circulation  
Robin Kodaira

Tewksbury Basement, Room 84, (914) 758-0774

Features Editor  
Linnea Knollmueller

Sports Editor  
Joshua Bell

Copy Editor  
Lilian Robinson

Calendar Editor  
Diego Socolinsky



# The Bard Observer Calendar

Brought to you by the Dean of Student's Office

April 19 to April 25, 1995

## TRANSPORTATION

**Jitney Schedule:** the Jitney runs Monday through Friday and makes stops at the following places and times:

Robbins: 8:30a, 8:50a, 9:10a, 9:30a, 9:50a, 10:10a, 12:00p, 12:20p, 12:40p, 1:00p, 1:20p, 1:40p, 4:00p, 4:20p, 4:40p, 5:00p, 5:20p, 5:40p.

Tewksbury: 8:42a, 9:02a, 9:22a, 9:42a, 10:02a, 10:22a, 12:12p, 12:32p, 12:52p, 1:12p, 1:32p, 1:52p, 4:12p, 4:32p, 4:52p, 5:12p, 5:32p, 5:52p.

**Tuesday:** Van to the Lyceum in Red Hook, 6:30p - 10p.

**Wednesday:** Shop 'n Save Run, 6p - 9p.

**Friday:** Vans to Rhinecliff Station at 4:20p (4:50 train), 6:00p (6:31 train) and 7:20p (7:51 train). Vans to Poughkeepsie Station at 5:20p (6:12train), 7:35p (8:20 train) and 10p (10:45 train). Trip to the Poughkeepsie Galleria Mall, leaves at 5p and returns at 9p.

**Saturday:** van to AA Red Hook, van leaves at 6:15p from Security. Shuttle to Tivoli, Red Hook, Rhinecliff and Rhinebeck, 10a - 2p.

**Sunday:** meet at 9:15a to go to various churches in Red Hook, Rhinecliff and Rhinebeck (St Johns, St. Chris and St. Paul). Pick ups at Rhinecliff Station for trains arriving at 6:07p and 8:55p and 10:06p. Pick ups at Poughkeepsie Station for trains at 6:46p, 8:46p and 10:52p.

Meet all vans behind Kline

Wednesday April 19	Thursday April 20	Friday April 21	Saturday April 22	Sunday April 23	Monday April 24	Tuesday April 25
<p><b>Table Française.</b> Kline President's Room, 5:30p - 6:30p.</p> <p><b>German Table.</b> Join us for some conversation. All are welcome to attend! Kline Commons Committee Rooms, 6p - 7p.</p> <p><b>Mary Lee Settle,</b> award-winning essayist and novelist will be reading from her work. Olin 102, 7p.</p> <p><b>The Women's Center</b> invites you to come to Annandale House for talk and tea from 7p to 8p. You can stay later for the weekly meeting from 8:30p to 10p.</p> <p><b>Learn how to write</b> and submit a budget and how to appeal to the Emergency Fund. Kline President's Room, 6:30p.</p>	<p><b>Russian Discussion or Russki Stol.</b> All are welcome to come from 5p 'till 5:30p. Kline Commons Committee Rooms.</p> <p><b>Sister Cities Project Meeting.</b> Kline Committee Rooms, 5p.</p> <p><b>S/M ACES</b> meets every Thursday at 6pm in Kline Committee Room.</p> <p><b>Benvenuti alla Tavola Italiana.</b> Kline President's Room, 5-6p. Join us for Italian conversation from 6-7p. All welcome! Olin 202, 7p - 9p.</p> <p><b>Facing the Challenge: U.S. Aid to Russia.</b> A talk by Bard graduate Mark Nichols, Program Analyst in the Office of Emergency and Humanitarian Assistance. Olin 202, 7p.</p> <p><b>Reading by Eileen Myles.</b> Bard Hall, 7p.</p> <p><b>Songs by Pat Humphries.</b> DeKline, 9p.</p> <p><b>The Wedding Banquet</b> Film sponsored by the AASO. Olin, room TBA, 8p.</p>	<p><b>Bard Opinion Table.</b> Talk with the Resident Directors and members of the Student Life Committee. Kline Commons, 12p - 1p.</p> <p><b>Bard Christian Fellowship Meeting.</b> Bard Chapel, 7p. All are welcome.</p> <p><b>American Symphony Orchestra Chamber Players: "The Memory of War."</b> Works in celebration of the founding of the United Nations. Olin Auditorium, 8p.</p> <p><b>Jewish Students' Organization</b> meeting. Kabbalat Shabbat: Wind down after your hectic week. Olin Moon Room, 8:30p.</p> <p><b>Queerweek Coffeehouse.</b> DeKline, 9p.</p>	<p><b>Earth Day Celebration.</b> Spend a beautiful spring day on the Ludlow Lawn, from 10a to 5p.</p> <p><b>Annual Cultural Show,</b> organized by the International Students' Organization. An evening for world peace and harmony. Olin Auditorium, 7:30p.</p> <p><b>Dance Performance</b> by Bard Alumnus David Parker ('84). Sponsored by the Dance Club. A \$2 donation is suggested. Avery Art Center Dance Studio, 8p.</p> <p><b>Spirit of the Earth.</b> A performance by Native American harp player and environmentalist Ilfra Halley, in celebration of Earth Day. Bard Chapel, 8p.</p>	<p><b>Help clear a trail.</b> Red Hook Trails will clear the remaining portion of the trail that connects Bard to Tivoli. Call ext. 7454 for information.</p> <div> <p><b>The Bard Music Festival</b></p> <p>*Do you have a passion to do good deeds?</p> <p>*Do you have a desire to go around town and schmooze with the entrepreneurs in the Hudson Valley?</p> <p>*Do you have a car?</p> <p>If you have answered YES to one of the above, the The Bard Music Festival needs you!</p> <p><b>RIGHT NOW!!</b></p> <p>We need able bodies to solicit advertisements for this summer's Festival Program Book. (\$\$\$ for you!)</p> <p>If you would like to help or find out more details, please contact Robin at 758-7410 Mon.-Fri. 9-5.</p> </div> <div> <p><b>Free Fitness Seminars</b></p> <p><b>April 17 - 21: Alternative Ways to Achieve Fitness Without Entering a Weight Room.</b></p> <p><b>Instructor: Gina Delmont, Bard Athletic Trainer/Fitness Director.</b></p> <p><b>Stevenson Gymnasium</b> 7:00pm - 8:00p.</p> </div>	<p>Sign up for Yom HaShoah (holocaust remembrance day). Name reading vigil on April 27. Sign up during lunch or dinner at Kline.</p> <p><b>Clothing and jewelry from Bali,</b> sold today outside of Kline.</p> <p><b>Whipping Workshop,</b> sponsored by S/M ACES. Information on consent, safety, technique and after-care will be discussed. Old Gym, Studio A, 7p.</p> <p><b>The Organization of Work in America.</b> A lecture by Paul Osterman, Professor of Human Resources and Management at the Sloane School of Business at M.I.T. Levy Institute, 8p.</p>	<p>Sign up for Yom HaShoah (holocaust remembrance day). Name reading vigil on April 27. Sign up during lunch or dinner at Kline.</p>