

Bard College  
Student Newspaper Archive  
(1895-1999)

All Rights Reserved. Copyright © 1999 by Bard College

# OBSERVER

Vol. 1      No. 1      September 1, 1995

Page 1	Observer to Undergo Major Changes in the Coming Weeks Newspaper aims to change the way the Bard students are informed Pedro Rodriguez New Faculty Members Bring Diversity and Experience Linnea Knollmueller
Page 2	Bard Students Commended for Heroic Vermont Rescue Delegates Reflect on Nicaragua Students share in local customs and culture Dead Squirrels Baffle Local Man
Page 3	Official Documents
Page 4	Entertainment Committee Gears Up for a Productive Semester Joel Hunt
Page 5	New Recreation Director Makes Effort to Increase Activities at Bard Dave Hyde and Meeka Bhattacharya Inside the Game Strong Like Bull, Sexy Like Woman Tonya Giarnella
Page 6	Is There Any Safety in Numbers? Matt Johnson The Somnambulist We Work Hard for the Money So You Better Treat Us Right Pedro Rodriguez
Page 7	No Comment X Marks the Scam Shawnee Barnes Health Services Undergoes Many Changes Over the Summer Break Karen Lee Hansen
Page 8	[Calendar of Events]



"What's our name?"

# BARD OBSERVER

Volume 1, Issue 1

September 1, 1995

SPORTS • PAGE 3

Is there a director in the house? Interested in sports and fitness? You might want to get to know the new gym director. The Observer has an interview with him inside.

OPINION • PAGE 2

What's inside... Letters to the Editor/Editorials have moved to the front of the paper. Check them out on page 2.

## Observer to undergo major changes in the coming weeks

Newspaper aims to change the way the Bard students are informed

Pedro Rodriguez  
Editor-In-Chief

The Bard Observer, if that is its real name, is getting overhauled. The Observer has worn many suits over its thirty-some year history, looking at times like everything from a literary magazine to the New York Times. Things are changing again.

Beginning this issue, the paper will be put together by an almost entirely new staff. There are two hold outs: Linnea Knollmueller (now as News Editor) and me.

Returning to the staff as the new Sports Editor is David Hyde, who was a mere sports writer last semester. You may remember him from his coverage of spring 1995 intramural softball.

The new Managing Editor, responsible for much of the layout,

is Richard Stern. Working with him as Associate Editor is Joshua Bell.

Last, but not least, is Lillian Robinson, our loquacious Copy Editor/Caricaturist who may be writing for us—maybe not.

The Observer will also be sporting new sections.

Courtesy of Literary Editor Larry Bortman, each future issue will have a section devoted to literature (poetry and short stories). All

published work will be unedited. See page 2 for more information.

Sports has been expanded to Sports and Leisure to include a

"Beginning this issue, the paper will be put together by an almost entirely new staff."

greater variety of stories. (Look for an article on the fate of the

Menage.)

There are also more columnists. The Observer has sought and will continue to seek more Bard opinion writers. The paper is a great place for public debate.

Finally, the Observer, is sponsoring a name change contest. For details, turn to page .

What you hold in your hand is essentially a new Bard newspaper. Any and all comments are appreciated.

## New faculty members bring diversity and experience

Linnea Knollmueller  
News Editor

Six new faculty members have been added to Bard College this fall. Each of their positions has been predetermined as tenure track, allowing them to forego the initial rehiring evaluation process.

Three of the new faculty members are filling newly created positions. Michele Frank will teach African American Literature, Craig Smith will teach Post-Colonial Literature, and Sarah Willie will expand the sociology department. The other hires are filling vacancies in previously existing positions. Jonathon Brockopp, an Islamicist, is replacing Lynda Clark, who had been a visiting professor; Jill Chafetz is taking over for Nilofar Halsted, the psychology professor who resigned last spring; and Melanie Nicholson is replacing Malgorzata Oleszkiewicz in Spanish.

Dean of the College Stuart Levine is particularly enthusiastic about the new positions.

"We have been searching for three years to fill the position in the Languages and Literature Division for someone

to teach African American Literature. We finally hired Michele Frank, but had to compete with as many as six or seven schools to hire this individual."

Those schools included Pitt, Rutgers, the University of Texas, and Trinity College.

"She chose Bard because we matched her other offers. She saw Bard as the place to do the kind of teaching and research work she wants to do," commented Levine.

Joining her at Bard is her husband, Craig Smith. "He was hired full time, tenure track because he teaches in an area underrepresented in our curriculum: Post-Colonial Literature."

"The third new position was established two years ago," said Levine. "It's in sociology. This move was initiated by students to [racially] diversify the faculty."

Adding six new faculty members per year is the average for the college. "[The fact that three new positions were filled] is astounding, a real expansion of the faculty. A commitment made to the students to actively work to increase the diversity of the faculty has finally been accomplished," said Levine. "That doesn't mean that we stop now; we have succeeded in L&L, Social Studies and the Arts. We're still working in Natural Sciences, but it is a difficult matter. In every way this is a positive step. It shows that with the faculty and lots of other people involved in the process, it can be successful."

### What's our new name?

The staff of the Bard Observer is starting fresh, that means that we need a new name. Something with flair, charm, or just raw sex appeal. We don't care.

Only one catch, the students have to pick it. We'll accept ideas delivered to the Bard Observer office, vote, and pick one of your suggestions two weeks from today.

### In next week's issue...

- Interviews with new faculty members
- Complete coverage of the budget forum
- All new school calendar



B

BARD OBSERVER

Pedro Rodriguez  
Editor-in-ChiefRichard Stern  
Managing EditorJoshua Bell  
Associate EditorLinnea Knollmueller  
News EditorDavid Hyde  
Sports and Leisure EditorLawrence Bortman  
Literary EditorLillian Robinson  
Copy EditorMeeka Bhattacharya  
Advertising Manager

B

BARD OBSERVER

## Bard students commended for heroic Vermont rescue

Letter to the Dean

*The following letter was sent to the Observer from the Dean of Students Office.*

To the Dean:

This may or may not be of significance to you. But most schools receive a disproportionate amount of negative mail about their students and I thought I'd change the ratio. Two weeks ago I was rescued by three Bard College students.

On a fairly steep mountain path in northern Vermont, I took a wrong step and broke my ankle. It was quite a severe compound fracture and there was clearly no way my husband and I could make it down alone. Reluctantly, he left me lounging on

the hillside while he went for help. Three young men, having completed their own hike, were just pulling away from the trail head when he arrived. They drove him to the nearest house where he phoned the rescue squad and waited for it. They returned to the trail, hiked in at top speed, and found me. They couldn't have been better. I was actually distracted somewhat by their company and conversation. They did what was needed—such as propping the injured leg to relieve the pressure on the break—and were responsive without being overwhelming. When the rescue squad arrived and my husband thanked them and said they didn't need to stay, they stayed. Since I am no lightweight and needed to be carried more than half a mile down the narrow rocky path, their added strength was definitely

called for and willingly given. It wasn't easy. I'm fine now, just impatient to be mobile again, and I have them among others to thank.

Things were confused, but my husband managed to write down one name—Roger Yerburch. The other two students were named Tim and Jesse (Roth?). I think they are entering their second or third year. Roger and Tim are lit. majors, Jesse is specializing in physics.

I think these were already good guys before they got to Bard. But if you think anything in the general academic air there is of a nature to strengthen compassion and response to human need, take a bow. It's working.

Yours truly,  
Sally T. Margolis

## Delegates reflect on Nicaragua

*Students share in local customs and culture*

Letter to the Editor

Dear Bard community,

With the proceeds from the community-supported Sister Cities auction last semester, three Bard students were able to participate in a cultural exchange with Bard's sister city of Marreynaga, Nicaragua. After the summer to reflect on our delegation, we would like to describe what we were able to learn and accomplish.

On June 1, we (Katrina, Kate, and Eric) arrived in Managua, the capital of Nicaragua, and met Jonah Gensler, Bard alumnus and coordinator of our Sister Cities Project. Next, we travelled to Marreynaga, Bard/Mid-Hudson's sister city, with Jonah and Suzanne Hechmer, who spent six months in Nicaragua interning with the project. Over the next nine days, we lived with families and spoke with members of this rural Nicaraguan community about religion, politics, economics, domestic life, and other social issues. Simultaneously, the three of us experienced first hand the daily living conditions of the Marreynagans.

During our stay in Nicaragua, Jonah Gensler accompanied us both as translator and teacher. As a resident of the country for three years, he was an invaluable resource to further our understanding of the culture, politics, and history of Nicaragua. He will be in the United States September 18-21. As part of our activities this semes-



*Dead squirrels baffle local man*

Letter to the Editor

Hi,

When you drive along Rt. 209 to the Uptown Kingston exit or back from that exit, there are a lot of dead squirrels on the side of the road. I'd say there could be as many as 50. I've never, however, seen any groups (herds?) of them run out into the road. Can anyone explain this? Perhaps some investigative reporting is in order.

Sincerely,  
Matt Moran

ter, we are planning to sponsor him as a speaker on campus to share his insight on grass-roots activism and life after Bard.

We invite you to look at our display of our photographs from our delegation to Nicaragua outside Kline Commons this week. We'll also be raffling off chances for a genuine Nicaraguan hammock for only one dollar. Also, on Wednesday, September 20, at 7pm in the olin Moon Room, we will be holding an introductory meeting for anyone interested in joining the Bard/Mid-Hudson Sister Cities Project. Look for articles in future issues of the *Observer* highlighting different aspects of our trip. For more immediate information about the Sister Cities Project, contact Kate at 752-4121.

Yours truly,  
The Bard Sister Cities Project:  
Brent Armendinger, Kate Giusti, Katrina Hajagos, Suzanne Hechmer, Diane Lowy, Eric Schwartz

*Forum meeting  
tonight in Kline  
Commons. Let your  
voices be heard and  
defend your budgets.*

*Dining Room, 7:30pm*

## Official documents

### Bard College Convocation Fund Budget

September 9, 1995

	Amount Requested	Amount Allocated
AASO	\$2,136.00	\$2,000.00
Adolph's Club	3700.00	50.00*
Anthropology Club	400.00	0.00
Art Club	1961.00	325.00
Art History Club	1650.00	0.00
Asian Film Club	1232.00	700.00
Audio Co-op	380.00	380.00
Backgammon Club	120.00	0.00
BBSO	3000.00	2100.00
BiGaLa	2125.00	1300.00
Bitches With Needles	1300.00	100.00
BJSS	4853.60	2500.00
CAN/NORML	1050.00	500.00
Central Committee	2030.00	2030.00
CESO	1801.00	800.00
Chess Club	829.75	300.00
Christian Fellowship	225.00	225.00
Dance Club	1900.00	550.00
Debating Society	3550.00	1500.00
deKline	2403.00	1350.00
Dime Store	400.00	400.00
Earth Coalition	700.00	0.00
EMS	796.00	796.00
Entertainment Committee	13500.00	9950.00
Film Committee	11000.00	11000.00
Folklore Society	950.00	550.00
Folk Society	895.00	450.00
Habitat for Humanity	180.00	100.00
Human Rights Network	2250.00	750.00
International Socialist Organization	1480.50	750.00
ISO	2635.00	2000.00

Jazz Heritage Club	2800.00	550.00
JSO	2755.00	650.00
LASO	2500.00	1800.00
Magic	351.00	0.00
Martial Arts Club	2110.00	850.00
Medieval Restoration Society	1655.00	150.00
Model UN	4626.00	900.00
New Visions Photography	2250.00	0.00
Observer	3570.00	3570.00
Outing Club	860.00	460.00
Pinochle Club	82.00	0.00
Psychology Club	111.00	50.00
Rugby Club	450.50	200.00
Russian/Eurasian Studies Club	1350.00	500.00
Scottish Country Dancing Society	289.00	189.00
Sister Cities	805.00	500.00
Skateboard and Snowboard Club	1955.00	0.00
S/M ACES D&S	1756.68	800.00
S.M.O.G.	764.00	764.00
Smoking Society	25.00	0.42
Student Center Sound System	800.00	800.00
Student Recording Studio	1200.00	1200.00
Sudden Repertory Theatre Co.	500.00	300.00
Theatre Club	600.00	300.00
Women's Center	2000.00	750.00
WXBC	2040.00	1500.00
Zine Distro	650.00	250.00
	\$110,388.03	\$60,439.42

Approximate Amount in Student Convocation Fund	\$68,500.00
Amount Allocated	\$60,439.42
Approximate Emergency Fund	\$8,060.58

\* Future Funding Contingent Upon Submission of Complete Proposal



# Entertainment Committee gears up for a productive semester

Joel Hunt

Guest Writer

After a productive summer in which many important contacts with bands and booking agents were established, the Bard College Entertainment Committee (BCEC) returns to campus running at full steam.

The BCEC consists of three students: John Morton, Katherine Duff Smith, and myself, Joel Hunt. We were elected at the end of 1994's Fall semester to serve the student body. Our purpose is to bring a number of diverse musical acts into the Bard community. We feel that this semester's tentative schedule of events will prove to be the best in recent memory.

Our first show will be on Thursday, September 28, when Shellac, Uzeda, and Dis- will play at the Old Gym. It is quite an honor for us to host Shellac because they tour so infrequently; not many venues are able to present such a legendary band.

Shellac is composed of Steve Albini, Bob

Weston, and Todd Trainer, names that should be familiar to anyone familiar with rock music since 1980. Steve Albini formerly played guitar and sang in the abrasive bands Big Black and Rapeman. As a producer, he has recorded albums as diverse as Nirvana's *In Utero*, PJ Harvey's *Rid of Me*, the Pixies' *Surfer Rosa*, and Superchunk's *No Pocket for Kitty*, among many others. He has also written essays for *Forced Exposure* and *The Baffler*.

Bob Weston formerly played bass with the Volcano Suns and the Juliana Hatfield Band. He is also a recording engineer, and has recorded Velocity Girl's *Copacetic*, Rodan's *Rusty*, and the Coctails' *Peel*. Todd Trainer has been active in the Minneapolis scene for over a decade as the drummer for the bands Breaking Circus and Rifle Sport, as well as the vocalist/guitarist of Brick Layer Cake.

The bands supporting Shellac are also quite exciting. Uzeda, from Sicily, Italy, will be appearing on their first-ever American tour. Uzeda's debut EP will be released September 19 on Touch and Go Records. Dis-, who hail from Wisconsin and have release two albums on the 12-Inch Records label, have toured extensively with Shellac,

as well as countless other bands. This is definitely a show worth experiencing.

On Monday, October 23, we would like to bring you Man...or Astroman?, a frenetic surf-rock combo, but we need your help. We have been informed by the Dean of Students that we cannot hold a show on a Monday night. Apparently, the Bard Administration feels it's perfectly okay for you to stay out late attending a lecture, but it's *not* okay to stay out late having innocent fun. This is quite a shame because Man... or Astroman just happen to be the most entertaining band on the planet. In fact, they are so popular that a Monday night was their only free night of the week!

Not all is lost, however. A petition will be circulated this week among the student population so that you can directly help our cause. I personally feel insulted and condescended-to by the Administration over this matter because I feel that Bard students should be the ones deciding what we want to do with our free time, not the Administration. Bard College is supposed to be a place where one has the opportunity to explore both freedom and responsibility on one's own terms. Oh, well.

On Thursday, October 26, the BCEC

brings Jawbreaker and Jawbox, as well as an undetermined third band. Jawbreaker have released a slew of albums (including *24 Hour Revenge Therapy*, recorded by Steve Albini), and have just recently signed to the DGC label (the home of Nirvana, Hole, Beck, and Nelson(!)). Their brand of pop-punk has become quite popular within the last two years, but unlike Green Day, Jawbreaker is actually good. Jawbox have released two albums on the Dischord label, and one album on the Atlantic label (home of Led Zeppelin). Hailing from the Washington DC area, Jawbox are a good example of that area's unique brand of guitar rock.

In November or December, we plan to bring Thinking Fellers Union Local 282. The Thinking Fellers combine a unique blend of rock, punk, and folk to create a sound completely their own, yet rooted in the experimentation of groups like the Residents or the Fall. As soon as we can grab an available date, we will let you know.

These are the more definite plans we have for the Fall semester, but as the semester progresses, we will try to bring even more bands to Bard. If you or your club is interested in co-sponsoring a show with us,

## Join the Bard College Community Chorus

Luis Garcia-Renart, conductor

Come and sing with us Haydn's Oritorio *The Creation*

We will perform it with full orchestra on Sunday

December 3, 1995.

No auditions required!

If you want to sing—you are in!!

Rehearsals are held on Thursdays from 7:00 to 9:15 pm in Bard Hall.

First rehearsal is on Thursday Sept. 7th. at 7:00 pm

Vocal scores are available at the Bookstore.

SINGING IS FUN !!!

COME AND BRING A FRIEND

## deKline

Attention club heads and people who desire to bring entertainment to Bard! deKline's concert space and sound system are available for all those who desire to use them for an event. Contact one of the student managers or leave a message at 752-4535 with your name, phone number, organization, event date and times to secure the space. If you desire to use our sound system, leave the necessary information with your message. We will contact you without delay.

## Sexual Identity Peer Support Service

Is here to offer help as you deal with coming out, labels, or anything else to do with sexual orientation. Write box 1136.

Absolutely Confidential & Anonymous (if you wish).

We are not experts, but we will listen and offer the wisdom of our experiences.

## deKline!

Is the library putting you to sleep? Don't worry! deKline is open for fun, friends and food, Monday to Saturday, 8 pm to 1 am. And Sundays from 8 pm to 12 am. Bring your homework, friends and favorite music, and enjoy a good time among your peers.



## New Recreation director makes effort to increase activities at Bard

Dave Hyde and Meeka Bhattacharya  
Sports Editor & Reporter

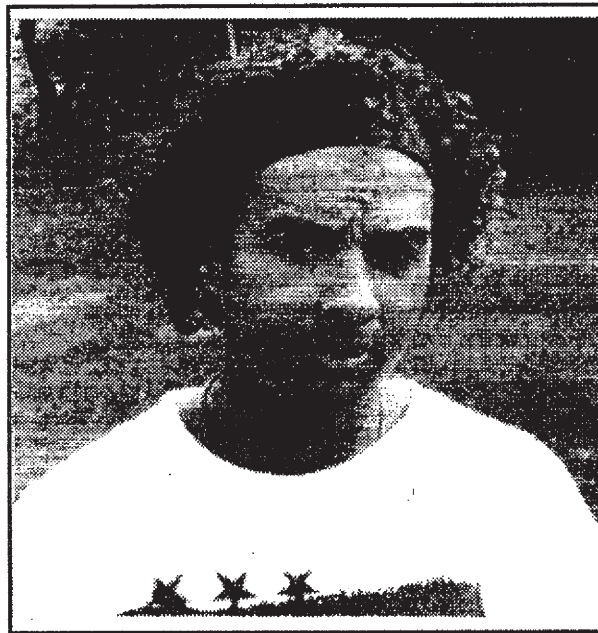
At Bard, Gregory Moss-Brown will be considered a radical. Moss-Brown is the new Director of Campus Recreation and the latest Men's Soccer coach; he is planning on changing not only how his team performs on the soccer field, but how sports in general are perceived at Bard.

Moss-Brown had an early interest in soccer which paid off when he left his native England to study in the U.S. with a full athletic scholarship at Hartwick College. Although Moss-Brown was a star during his days at the college, he left school without completing his masters thesis in sports psychology to play for professional soccer teams in France and Portugal.

After three years as a professional soccer player, Moss-Brown returned to the States to complete his masters at Ithaca University, then went to the University of Kentucky where he not only received his second masters, but met his future wife. Since then he has run independent camps in Florida and coached soccer.

And despite all of this experience, Moss-Brown was not quite prepared for the peculiar world of Bard Sports. The coach is enthusiastic about coaching but is disturbed by the school's apathy for sports. In his interview with the *Observer*, he emphasized the need to balance the academic life with athletics and added, "there are too many smokers on this campus..."

Moss-Brown is even more distraught by the campus' lack of support for student athletes.



File Photo

"When you go to the bookstore what do you see? Bard t-shirts for kids to take home. But you never see anything like Bard Soccer Team or the Bard Basketball Team."

Moss-Brown has now begun preparations to increase the campus' awareness of its athletic facilities; he also told the *Daily Freeman* that he wants a "stronger rapport with the administration."

While these goals are nothing new to the Athletic Department, Moss-Brown's other goal is a revolutionary one for Bard: he's working on getting a recruiting budget from the Admissions Office so that the Athletic Department can recruit in high schools for athletes. When told that recruiting would be unprecedented for Bard, Moss-Brown responded simply "it will be done."

## Inside the game

### Strong like bull, Sexy like woman

Tonya Giarnella  
Staff Reporter

As most informed Bard students have realized by now, the Women's Soccer Team has opened this season with a group of women that lives up to its reputation of "strong like bull, sexy like woman." The players have proven themselves to be the best group of players I have seen in my four seasons as a Bard soccer player.

For the first time we have a group of hard-working individuals who actually know how to play the game and who work well as a team. In addition, a combination of refreshing changes have been added this season to make life easier on the players.

The new coach, Artie Gibbins, is full of enthusiasm and expertise in the soccer field; the incoming freshmen have proven themselves to be prepared for the challenging world of Bard Athletics. Along with the help of our new trainer, Gina Delmont and her student assistant Josh Brussel, we have been able to recuperate from the near fatal injuries that usually plague our team throughout the season. (Perhaps these injuries are in some way connected to the fact that we practice on the pot-hole ridden field behind Kline?)

And finally the new Athletic Director Kris Hall (along with the indispensable and ever present Jamie Schultz) has already made a noticeable impact on the program, bringing the

team to a more serious level with new home team uniforms, warm-ups and an all-around professional air that had not existed in previous years.

The women's team has now played three games. The first game, at home against SUNY New Paltz, resulted in a loss (5 to 1) despite what Coach Greg described as "moments of brilliance."

The team's loss was due to a combination of external factors, as well as simply being out-matched. First of all, the SUNY team is one of the best teams on our schedule. Secondly, they had already played a few games in which they were able to work out the bugs that are always associated with the first game. Considering the circumstances, we played a good game on

the whole and have already begun to prove that the season will end in success.

Our second and third games have further demonstrated the immense potential that is waiting to explode in the faces of all the skeptics of Bard Soccer.

On Saturday and Sunday the team participated in a tournament and brought home the second place trophy. Team Captain Rosanna Reff, Susie Salamy, Paige Taylor and I were rewarded with All-Tournament Player Awards for the team's outstanding performances. Bard beat Wells College (3 to 1) and lost a high scoring game (5 to 3) to the tournament champions Albany Pharmacy. The loss was indicative of the new attitudes of the Bard team; despite a deficit of

3 to 1 the team rebounded to tie the score in the second half.

The team would like to thank all of the enthusiastic spectators who were present at the first home game on Thursday, especially the callipygous men from the Bard Men's Soccer Team, as well as our two away-game chauffeurs, Helmut and Greg DiMammios who were also the first audience for our team's newly blossoming Poland Springs Bottle Band.

We hope that our fans come to our next home game on Saturday against Bridgeport University, and we hope that those who were present at the last game bring more friends. (We do not mind if the fans bring banners and noise makers.) Thanks again for your support.

## Bard Records

### •Men's Soccer (0-2)

Lost home game September 6 to New Paltz.

Lost away game September 9 to New Jersey Institute of Technology.

(Brian Tafelski's goal in the first half tied the score at 1-1)

### •Women's Soccer (1-2)

Lost home game September 7 to SUNY New Paltz.

Won first game September 9 of Albany College of Pharmacy Tournament against Wells College (3-1)

Lost Championship game September 10 to Albany Pharmacy (5-3)

(Team wins first trophy in the history of women's soccer at Bard)

### •Women's Tennis (1-0)

Match on September 9 postponed by rain.

Won match September 11 at Mt. St. Mary College 8-1 (Seven new players on team)

### •Cross Country

Two of four points at Quinnipiac College Invitational

(Men had seventh best of eleven teams. Krissy Foley was thirty-eighth of seventy women with a time of 23 minutes and 49 seconds)

Sports and Leisure

Where athletics meets sitting around.



## The Column

### Is there safety in numbers?

Matt Johnson  
Columnist

Is there safety in numbers? In light of the events of last semester, the guards' concern seems to be the question most appropriate and compelling for the present. Even the L&T manual of this year's freshman class echoes this concern with its advice to "use the buddy system—don't walk alone." "At night, walk in well-lit areas" and "don't cut through the woods," are other reminders that Bard isn't necessarily the Garden of Eden that it appears to be.

The administration reached an agreement with security before the start of the fall

term after about a year and ten months of negotiation. The guards are now unionized under The United Plant Guard Workers of America; the support for the Bard Foot Patrol by the administration, along with the extended shuttle hours that are in effect, give the unmistakable signs that more auspicious days are in fact in sight.

Yet one cannot mistake these token gestures to be the end of security problems at Bard. Further maintenance of the infrastructure of security is in order so that the number of guards at present can perform as effectively as possible. Then there must be a reevaluation of the numbers and what seems to be a disproportionate number of guards to

tasks and responsibilities. After all, there are still about 72 buildings on 600 acres along with 1,200 students, for which an average of three guards on weekdays and four guards on weekends are responsible. A follow-through is necessary by the administration in order that the major progress made to improve security doesn't later prove to be empty and meaningless. The administration must be held accountable by the students (often by default the conscience of the administration) for the structural deficiencies that still exist.

While it is true that the college installed more lighting on the road between the gym and Brook House, many details still need attention. Manor and Robbins have emergency phones outside their dormitories as well as do the Ravines, yet no such emergency phone are in place in Crueger Village, Annandale House, Sands, Gahagan or Feitler—the dorm

closest in location to last semester's rape. Furthermore, the emergency phones along the path from Main to North Campus still are not in working order.

Finally, it seems odd that the administration would promote a practice which may involve some danger without taking adequate measures to accommodate an emergency. Yet the L&T manual for Friday, August 11, advertises: "Find out where the hidden falls are on campus, also a chance to jump in. Rain or shine hike and swim led by the recreation staff." Well, a freshman did jump in and he injured his leg. But instead of being able to call security from an emergency phone placed at the Field Station gate, the student had to limp all the way to Tewksbury.

But it was only last spring that a student-formed committee designated the Field Station gate as a site where an emergency phone and light would be beneficial. This suggestion, however, was not followed up on by the administration because only two students and the former Dean of First Year Students Jeff Huang comprised the committee making site recommendations. The students' apathy accorded the administration's

## The Somnambulist

### We work hard for the money so you better treat us right

Pedro Rodriguez  
Editor-In-Chief

Call me Pete (it's easier to pronounce). I'm the new Editor of the Observer and I've always wanted a column.

Some may have noticed that the Observer's budget request for the fall semester was granted in full by the Planning Committee. In anticipation of an uproar, I decided, for my maiden voyage in column writing, to print the Observer's budget request verbatim. It was written by me and though printing it may not be the literary thing to do, it might make tonight's budget forum smoother. Here goes.

The Bard Observer is the oldest and most consistent student publication (and perhaps the oldest and most consistent student organization) on the Bard campus. The Bard Observer publishes more writing than any other student publication, and publishes it with greater frequency. The Bard Observer is the primary source of campus news, excluding word-of-mouth.

Last semester (spring 1995), Observer production costs exceeded funding. The final printing bill of the semester from the Register Star totaled \$1,592.72. That amount was borrowed from fall 1995's convocation fund during the summer in order to eliminate the accumulation of interest. The remaining funds from the Observer's spring 1995 allocation were used to begin reimbursement. This leaves a debt of approximately \$1,300.

Here is the problem. The cost of printing for a semester—13 issues at a conservative \$230 per issue (read: many eight page issues) and excluding all other costs—is \$2,990. The Bard Observer was allotted \$1,200 from the spring

1995 convocation fund. Clearly, the allocation would not cover the printing costs. The Observer was forced to rely on advertising revenue to cover the bills. Last semester, the paper had to deal with a slew of delinquent advertisers. Too many didn't pay. (Seeking legal action costs more money.)

Moreover, as the convocation fund has grown to an estimated \$70,000 over the years, the Observer's allocations have plummeted. From fall 1990 to spring 1995, there has been a decrease of over 81% in Observer funding. During that time, newsprint costs have risen sharply. (Yet another of New York City's daily's perished this year.)

The Editor and Managing Editor have sought to trim every bit of fat from the Observer budget. For example, last semester, the Observer included its outstanding printing bill in its budget request. Interest was accruing as the Planning Committee deliberated. This semester's request does not include the first two issues. The Observer is switching from Citizen's Telecom to the Bard phone system and no longer pays for film reviews to save money. Furthermore, the paper will be distributed in stacks at various locations because the Observer can no longer afford to pay mailbox-stuffers (and God knows the staff doesn't have time to replace them).

The request before you of \$3,570 is the bare minimum on which to run the newspaper, excluding advertising. The debt will be repaid via eight monthly payments of approximately \$162.50, which will come from advertising revenue. Any surplus in ad revenue will go toward the debt to eliminate it more quickly.

If this budget is not granted as requested, the Observer will be forced either to publish biweekly, which would cripple the paper's timeliness and news coverage, or

#### Budget Stats

Printing cost		
\$260 per issue x 11 issues (1400 copies)	\$2,860	
Outstanding bills to date	\$0	
Photography cost (film purchase + development)		
\$15 per roll x 11 rolls	\$165	
Transportation cost		
22 trips to the Register Star (Hudson)		
11 trips to the Hudson Valley Mall	\$200	
Telephone cost		
\$125 line + \$200 long distance	\$325	
Misc. office supplies	\$20	
Total	\$3,570	
Liability (debt to convocation fund)	\$1,300*	

\* The figure of \$1,300 is an approximation (given by Treasurer Justice Platt) because the actual figure is as of yet unavailable. All calculations regarding the debt are based on this approximation.

Fall 1990	\$6,500	Spring 1993	\$0
Spring 1991	\$3,522	Fall 1993	\$2,200
Fall 1991	\$3,000	Spring 1994	\$1,000
Spring 1992 no record available		Fall 1994	\$1,500
Fall 1992	\$3,578	Spring 1995	\$1,200



## No Comment

### X marks the scam

Shawnee Barnes  
Columnist

The idea of the whole Generation X thing pisses me off. It's the name for a generation that's apparently lost and misplaced. The lamentation sounds like a broken record. What this whole Generation X thing means is also obscure.

I don't know if I belong to Generation X; maybe that's the problem. Who is part of this misplaced, misunderstood, and misinterpreted bunch of people? People say it's the age group between 20 and 29, yet those in the group who are well along their way in good jobs and/or raising a family don't qualify; it's the confused, aimless, and angry 20-nothings that do.

I guess I don't qualify because I'm not yet 20 and I'm not angry and confused all the time. But does that mean when I'm in my 20's I'm qualified?

Once the Generation X'ers reach 30, they're 30-somethings and aren't identified

with the Generation X thing anymore. There must be a waiting list of 19 years to become a Generation X member. Is there an initiation period I haven't been told about?

I hear to qualify, besides being in your 20's, with or without a college degree, you must be directionless and feel left with a bleak future and a dirtied world. If you qualify, questions arise such as: What do I do with this world? How can I get a decent job and still be truly happy? What can I do if behind every door, a bigot or a racist is standing holding a sign that reads, "Jesus loves you. Ban abortion," and around the corner a militia is preaching (they don't have signs because most members are illiterate) that the world is going to end and that I must buy my arms now?

If you don't ask these questions, you're not part of the X generation. And yet the questions persist: Whom to trust? Am I really hopeless because I don't have a job on Wall Street and I'm not everything my parents wished I'd be?

We've all asked these questions, yet it's Generation X that gets fingers pointed at it. No wonder there's a generation crisis—

we're all scrambling every which direction so as not to make the same mistakes our parents made. It's hard enough to stay above water.

To get back to the broken record, I'm sick of the media telling us we're the Winona Ryders or the Chris O'Donnells of the 90's. God forbid we have to relive a rerun of *Reality Bites*. Yes, there is a unique mentality to this generation, but there is a unique mentality to every generation. How much have people really changed since the yuppie-corporate-dog-eat-dog generation?

It is the media that insists there's a lost generation of unhappy people. The media invented the Generation X attitude for its own benefit. They created a theme around which to write their articles, meet their deadlines. Then the myth became quasi-reality.

A couple of years ago, images were projected onto society's horizon of the typical Generation X wanderer. For example, the loner-type Dylan McKay of the most famous (and richest) zip code in California. Who the hell can identify with him, or anyone from 90210? It's the trendy 90210 college years and the wild ways (with Daddy's

Visa) of Drew Barrymore in *Mad Love* and the P.C. consciousness of the three "typical" women in *Boys on the Side* that really get me.

I certainly can't relate. I know some people can identify with the Generation X'ers—they're the ones living out this "epidemic" born of the media.

If there really is a generation crisis going on, the root of the problem is not being addressed properly and the wrong people are getting the wrong message concerning the generation about to inherit the world.

An Old World Republican on Capitol Hill or a movie producer sees the X generation as a group of hopeless losers without a work ethic. This scares me because a rather bleak picture is being painted by these media-daddys.

Take Aaron Spelling. How do you think Tori got the part?

"Ah ma God Daddy. I totally represent Generation X. You have to make me the lead. I totally know what it's like out there. Daddy please don't make me get a real job. I'll give the Lexus back!"

No comment.

## Health services undergoes many changes over the summer break

Karen Lee Hansen  
Reporter

Student Health services at Robbins annex has undergone some changes for the fall semester. Director Marsha Davis is on leave until January, having recently adopted a Chinese baby. Assuming her responsibilities as director is Barbara Jean O'Keefe, who began working at Bard last year.

"The main goal of the health services is to make sure that the students feel they are in a safe, confident environment for health care—to create a working partnership with students to promote a healthy outlook, a well-balanced, physical, mental, and emotional well-being," said O'Keefe.

Having worked at the Westchester Medical Center for eight years, she now faces the challenges of working in a rural clinic. She said that the medical staff at Bard must always be ready to use critical thinking skills due to the fact that there is a lack of resources, being so far out in the country.

Other people at Health Services are Eileen Hilbrandt, Peggy Mantey and Carol Crimmins. Hilbrandt is the administrative assistant and the person to call for immunization appointments and insurance questions. Mantey is the clinic's new registered nurse. Crimmins, also an R.N., has been hired on a part-time basis to help train Mantey.

Health Services offers this advice for Bard students:

1. Yellowjackets are everywhere and will sting if you swing at or stay near them. They are attracted to perfume, drinks, and food.
2. Poison ivy and poison oak are everywhere. Should you make contact with either, scrub with dish detergent. It contains chemicals absent in regular soap which help dissolve the plants' oils.
3. Make an appointment before visiting Health Services. It makes everything run more smoothly.
4. A main goal of Health Services is to improve the working relationship with Northern Dutchess Hospital and its Emergency Room. Please submit any related comments or complaints.

The 1995-1996 Bard  
Observer announces a  
new poetry and fiction  
section.

Send your submissions  
to Literary Editor  
Lawrence Bortman  
via Campus Mail.



# The Bard Observer

Calendar brought to you by the  
Dean of Students office

September 13, 1995

## Transportation

### Shuttle Schedule

Monday-Friday, 8 am-4 pm: the first pick up will be in Tivoli at the Schoolhouse at 8:15 am and the last drop off will be at the Gate House at 3:45 pm. Wesley will lunch from 12-1 pm. Shuttles will complete its loop approximately every 30 minutes.

Tivoli: 8:15, 8:45, 9:15, 9:45, 10:15, 10:45, 11:15, 11:45, 1:00, 1:30, 2:00, 2:30, 3:00, 3:30

Triangle: 8:30, 9:00, 9:30, 10:00, 10:30, 11:00, 11:30, 12:00, 1:15, 1:45, 2:15, 2:45, 3:45

Evening shuttles run Monday-Thursday from 8 pm-2 am and Fridays and Saturdays from 8 pm-3 am. We are working on evening shuttles to Tivoli.

Tuesday: Van to the Lyceum theater in Red Hook: leaves at 6:30 pm and returns at 9 pm.

Wednesday: Shop 'n Save and Super K-Mart run: leaves at 6 pm and returns at 9 pm.

Friday: Vans to Rhinecliff Station at 4:20 pm (4:50 pm train), 6 pm (6:31 pm train), 7:20 pm (7:51 pm train). Vans to Poughkeepsie Metro North Station at 5:30 pm (6:21 pm train), 7:45 (8:20 pm train), 10 pm (10:45 pm train).

Saturday: Trip to the Galleria Mall in Poughkeepsie leaving at 5 pm and returning at 9 pm.

Local Shuttle—Tivoli, Red Hook, Rhinebeck, Rhinecliff, from 10 am-2 pm.

Sunday: From 9:15 am-11:30 am: Church run (St. Johns, St. Christophers, St. Pauls). Pickups at Rhinecliff Station for trains arriving at 6:07 pm, 8:55 pm, and 10:06 pm. Pick ups at Poughkeepsie Metro North Station for trains arriving at 6:46 pm, 8:46 pm, and 10:52 pm. Vans will stop by Kline Commons a half hour before train pick up for anyone wishing to make a train.

Meet all vans behind Kline

Wednesday  
Sept. 13

Thursday  
Sept. 14

Friday  
Sept. 15

Saturday  
Sept. 16

Sunday  
Sept. 17

Monday  
Sept. 18

Tuesday  
Sept. 19

Lecture: **The Future of Medicare.**  
Marilyn Moon, senior fellow, The Urban Institute.  
Levy Economics Institute, 8 pm.  
AA meeting (every Thurs.).  
Olin 310, 7:30 pm.

Crafts at Lyndhurst, 635 S. Broadway, Tarrytown, NY.  
10 am-5 pm.

Crafts at Lyndhurst, 635 S. Broadway, Tarrytown, NY.  
10 am-6 pm.

Crafts at Lyndhurst, 635 S. Broadway, Tarrytown, NY. 10 am-5 pm.

### ATTENTION STUDENTS NEEDING A RIDE FROM THE POUGHKEEPSIE TRAIN STA- TION ON FRIDAY NIGHTS

For a ride back to campus from Metro North Station in Poughkeepsie, you need to call Physical Plant before 4:30 pm Friday and give your name and train arrival time so that we can give the driver enough notice. IT IS VERY IMPORTANT THAT YOU NOTIFY PHYSICAL PLANT THAT YOU NEED TO BE PICKED UP. The driver will check in with Security for pick up schedules before his runs. ONLY IN EXTREME EMERGENCIES SHOULD YOU CONTACT SECURITY AFTER 4:30 pm.

### THE DEAN OF STUDENTS OFFICE

arranges weekly transportation to these activities/places (see Calendar for complete dates and times): Poughkeepsie Galleria, Hudson Valley Mall, Lyceum Theaters, Tivoli, Red Hook, Rhinebeck and Rhinecliff, Metro North and Amtrak, Churches, Shop 'n Save, Vassar, and Woodstock. The Dean of Students Office can also help with arranging transportation (for example) to : support group meetings (i.e. AA, ACOA, NA, etc.), doctor/dentist visits, HIV/AIDS testing, Kingston Trailways, Albany Train Station, Albany Airport, club trips, residence hall activities, New York City or not previously scheduled train station pick-ups.

For these trips, please call x7454 three days in advance and be aware that transportation depends on the availability of student drivers and vehicles. Depending on the distance, a small fee may be charged.

### HOW TO PUBLICIZE EVNTS IN THE BARD OBSERVER CALEN- DAR

1. Drop off the announcement at the Dean of Students Office, Ludlow 204. Please include your name and a phone number by which you can be reached.
2. If necessary, call extension 7454 to reserve a committee room in Kline for your event.